

 **BOEING**
COMPONENT
MAINTENANCE MANUAL

TO: ALL HOLDERS OF OUTBOARD TRAILING EDGE FLAP NO. 1 FORWARD FAIRING ASSEMBLY
COMPONENT MAINTENANCE MANUAL 57-26-21

REVISION NO. 11 DATED NOV 01/02

HIGHLIGHTS

Pages which have been added or revised are outlined below together with the highlights of the revision. Remove and insert the affected pages as listed and enter Revision No. and date on the Record of Revision Sheet.

CHAPTER/SECTION

AND PAGE NO.

DESCRIPTION OF CHANGE

TITLE PAGE

Added SP to title page.

1

TR & SB RECORD

Added Top Assemblies 113T1811-63G, -64G and components per PRR B13100-2.

1

401

1003-1011,1013-1029,
1031,1033-1043

501

Revised item numbers of the hinge fittings in the test and IPL to match the illustrations.

REPAIR 1-1

601

1027

501

Clarified non-destructive inspection in Check section.

REPAIR 1-1

Identified item numbers in the hinge fitting assembly repair, Repair 1-1.

601

REPAIR 1-1

Edited without technical change.

601

REPAIR 3-1

602-603

REPAIR 3-1

Edited item numbers in text to match the item numbers in the IPL.

602-603

701

1010

57-26-21

HIGHLIGHTS

01.1

Page 1

Nov 01/02

 **BOEING**
COMPONENT
MAINTENANCE MANUAL

CHAPTER/SECTION
AND PAGE NO.
1002

DESCRIPTION OF CHANGE

Clarified definition of alpha suffix for color coded parts.

57-26-21

HIGHLIGHTS

01.1

Page 2

Nov 01/02

OUTBOARD TRAILING EDGE FLAP NO. 1
FORWARD FAIRING ASSEMBLY

PART NUMBERS 113T1811-15SP,-16SP,-17,-18,
-19SP,-20SP,-21,-22,
-23SP,24SP,-25 THRU
-28,-45,-46,-51,-52,
-63G,-64G

COMPONENT MAINTENANCE MANUAL
WITH
ILLUSTRATED PARTS LIST

57-26-21

TITLE PAGE
Page 1
Nov 01/02

01.1



REVISION RECORD

- Retain this record in front of manual. On receipt of revision, insert revised pages in the manual, and enter revision number, date inserted and initial.

REVISION NUMBER	REVISION DATE	DATE FILED	BY	REVISION NUMBER	REVISION DATE	DATE FILED	BY

57-26-21

REVISION RECORD

01

Page 1

Jul 10/83



TEMPORARY REVISION AND SERVICE BULLETIN RECORD

BOEING SERVICE BULLETIN	BOEING TEMPORARY REVISION	OTHER DIRECTIVE	DATE OF INCORPORATION INTO MANUAL
		PRR B10450 MCB 1111-001 PRR B11382-2 PRR B11382-3 PRR B11993 PRR B13100-2	OCT 10/86 OCT 10/86 OCT 10/86 APR 01/88 APR 01/91 NOV 01/02

57-26-21

TR & SB RECORD

01.1

Page 1

Nov 01/02


BOEING
 COMPONENT
 MAINTENANCE MANUAL

PAGE	DATE	CODE	PAGE	DATE	CODE
57-26-21			REPAIR-GENERAL		
			601	APR 01/88	01.101
			602	APR 01/88	01.1
TITLE PAGE			REPAIR 1-1		
*1	NOV 01/02	01.1	*601	NOV 01/02	01.1
2	BLANK		602	BLANK	
REVISION RECORD			REPAIR 2-1		
1	JUL 10/83	01	601	APR 01/88	01.101
2	BLANK		602	BLANK	
TR & SB RECORD			REPAIR 3-1		
*1	NOV 01/02	01.1	601	APR 01/91	01.101
2	BLANK		*602	NOV 01/02	01.1
LIST OF EFFECTIVE PAGES			*603	NOV 01/02	01.1
*1	NOV 01/02	01	604	BLANK	
THRU LAST PAGE			ASSEMBLY		
CONTENTS			*701	NOV 01/02	01.1
1	APR 10/85	01.1	702	BLANK	
2	BLANK		ILLUSTRATED PARTS LIST		
INTRODUCTION			1001	JUL 10/83	01
1	JUL 10/83	01	*1002	NOV 01/02	01.1
2	BLANK		*1003	NOV 01/02	01.1
DESCRIPTION & OPERATION			*1004	NOV 01/02	01.1
1	JUL 10/83	01	*1005	NOV 01/02	01.1
2	BLANK		*1006	NOV 01/02	01.1
DISASSEMBLY			*1007	NOV 01/02	01.1
301	APR 10/85	01.1	*1008	NOV 01/02	01.1
302	BLANK		*1009	NOV 01/02	01.1
CLEANING			*1010	NOV 01/02	01.1
*401	NOV 01/02	01.1	*1011	NOV 01/02	01.1
402	BLANK		*1012	NOV 01/02	01.1
CHECK			*1013	NOV 01/02	01.1
*501	NOV 01/02	01.1	*1014	NOV 01/02	01.1
502	BLANK		*1015	NOV 01/02	01.1
			*1016	NOV 01/02	01.1
			*1017	NOV 01/02	01.1
			*1018	NOV 01/02	01.1
			*1019	NOV 01/02	01.1
			*1020	NOV 01/02	01.1

* = REVISED, ADDED OR DELETED

57-26-21

EFFECTIVE PAGES

CONTINUED Page 1

01 Nov 01/02

PAGE	DATE	CODE	PAGE	DATE	CODE
ILLUSTRATED PARTS LIST		CONT.			
*1021	NOV 01/02	01.1			
*1022	NOV 01/02	01.1			
*1023	NOV 01/02	01.1			
*1024	NOV 01/02	01.1			
*1025	NOV 01/02	01.1			
*1026	NOV 01/02	01.1			
*1027	NOV 01/02	01.1			
*1028	NOV 01/02	01.1			
*1029	NOV 01/02	01.1			
*1030	NOV 01/02	01.1			
*1031	NOV 01/02	01.1			
*1032	NOV 01/02	01.1			
*1033	NOV 01/02	01.1			
*1034	NOV 01/02	01.1			
*1035	NOV 01/02	01.1			
*1036	NOV 01/02	01.1			
*1037	NOV 01/02	01.1			
*1038	NOV 01/02	01.1			
*1039	NOV 01/02	01.1			
*1040	NOV 01/02	01.1			
*1041	NOV 01/02	01.1			
*1042	NOV 01/02	01.1			
*1043	NOV 01/02	01.1			
*1044	BLANK				

* = REVISED, ADDED OR DELETED

57-26-21

EFFECTIVE PAGES
 LAST PAGE Page 2
 01 Nov 01/02



TABLE OF CONTENTS

<u>Paragraph Title</u>	<u>Page</u>
Description and Operation.	1
Testing and Trouble Shooting (Not Applicable)	
Disassembly.	301
Cleaning	401
Check.	501
Repair	601
Assembly	701
Fits and Clearances (Not Applicable)	
Special Tools (Not Applicable)	
Illustrated Parts List	1001

57-26-21

CONTENTS

01.1

Page 1

Apr 10/85



INTRODUCTION

The instructions in this manual provide the information necessary to perform maintenance functions ranging from simple checks and replacement to complete shop-type repair.

This manual is divided into separate sections:

- | | |
|--|------------------------------|
| 1. Title Page | 4. List of Effective Pages |
| 2. Record of Revisions | 5. Table of Contents |
| 3. Temporary Revision &
Service Bulletin Record | 6. Introduction |
| | 7. Procedures & IPL Sections |

Refer to the Table of Contents for the page location of applicable sections. An asterisked flagnote *[] in place of the page number indicates that no special instructions are provided since the function can be performed using standard industry practices.

The beginning of the REPAIR section includes a list of the separate repairs, a list of applicable standard Boeing practices, and an explanation of the True Position Dimensioning symbols used.

An explanation of the use of the Illustrated Parts List is provided in the Introduction to that section.

All weights and measurements used in the manual are in English units, unless otherwise stated. When metric equivalents are given they will be in parentheses following the English units.

Design changes, optional parts, configuration differences and Service Bulletin modifications create alternate part numbers. These are identified in the Illustrated Parts List (IPL) by adding an alphabetical character to the basic item number. The resulting item number is called an alpha-variant. Throughout the manual, IPL basic item number references also apply to alpha-variants unless otherwise indicated.

57-26-21

INTRODUCTION

01

Page 1

Jul 10/83



OUTBOARD TRAILING EDGE FLAP NO. 2 FORWARD FAIRING ASSEMBLY

DESCRIPTION AND OPERATION

1. Description and Operation

- A. The No. 1 forward fairing assembly is an aerodynamic cover for the tracking mechanism of the outboard flap. The fairing is supported by two bulkheads which secure the fairing to the wing. Two hinged fitting assemblies on the rear bulkhead attach the forward fairing to the mid fairing.

2. Leading Particulars (Approximate)

Width -- 20.0 inches
Length -- 32.0 inches
Height -- 10.0 inches
Weight -- 9.5 pounds

57-26-21

DESCRIPTION & OPERATION

01

Page 1

Jul 10/83



DISASSEMBLY

1. Use standard industry practices for disassembly of this component.

NOTE: Disassemble this component only as necessary to complete fault isolation determine the serviceability of parts, perform required repairs and restore the unit to serviceable condition.

57-26-21

DISASSEMBLY

01.1

Page 301

Apr 10/85

**BOEING**
COMPONENT
MAINTENANCE MANUALCLEANING

CAUTION: DO NOT VAPOR DEGREASE GRAPHITE/ARAMID EPOXY STRUCTURES WITH CHLORINATED CLEANING AGENTS SUCH AS METHYLENE CHLORIDE, TRICHLOROETHYLENE, AND TRICHLOROETHANE. CHLORINATED CLEANING AGENTS WILL CAUSE DAMAGE TO GRAPHITE/ARAMID EPOXY STRUCTURES.

1,1,1-TRICHLOROETHANE IS ONE OF THE SOLVENTS ALLOWED FOR CLEANING COMPOSITE COMPONENTS. DO NOT SUBMERGE PARTS IN THE SOLVENT OR ALLOW STANDING SOLVENT ON THE PARTS OR DAMAGE MAY OCCUR. USE 1,1,1-TRICHLOROETHANE ONLY AS A WIPE SOLVENT.

1. Clean all parts in accordance with standard industry practices (Ref 20-30-03) except for graphite/aramid epoxy structures and rubber seals.
2. Clean rubber seals (25, 40, 43, IPL Fig. 1; 25, 26, 26A, 26G, 26H, 27, 27A, 27B, 27C, 27D, 27G, 27H, 27J, 27K, 27L, 28, 28A, 28G, 28H, 40, 43, IPL Fig. 2) with a solution of mild soap and water.

57-26-21

CLEANING

01.1

Page 401

Nov 01/02

CHECK

1. Do a visual check for any obvious damage on all visible parts according to standard industry practices. Do the penetrant check if the cracks or damage are seen or if you think there are cracks or damage.
2. Penetrant examine per 20-20-02 -- Grounding clip (216, IPL Fig. 1; 223, IPL Fig. 2), bulkhead (110, 115, 250, 250A, 255, 255A, IPL Fig. 1; 120, 125, 255, 260, IPL Fig. 2), bathtub fitting (105, IPL Fig. 1; 105, IPL Fig. 2), hinge fitting (180, 180A, 182, 182A, 185, 185A, 187, 187G, IPL Fig. 1; 180, 185, 190, 195, IPL Fig. 2).
3. Visual Check
 - A. Do a check of the honeycomb structure and bonded parts for evidence of delamination, internal water, scratches, and contour defects.
 - (1) If you see delamination or impact damage when you do a visual check, do an ultrasonic inspection or a tap test to find all damage. Refer to the 767 Nondestructive Test Manual, Part 4, 51-00-02 or Part 1, 51-05-01.

NOTE: For the tap test, use a solid metal disk and tap the surface area lightly but firmly. The void areas will produce a dull sound as opposed to a sharp sound on a solid bonded area. Refer to the 767 Nondestructive Test Manual, Part 1, 51-05-01.
 - (2) Do a check on areas you suspect of containing water with the radiographic or thermographic method. Refer to the 767 Nondestructive Test Manual, Part 9, 51-00-01.
 - (3) Do a check on the edges of the panel carefully for cuts and abrasions. Delamination starts very easily from damage to an edgemember of honeycomb panel.
4. Refer to 767 Structural Repair Manual, 57-53-70, for allowable damage data.

57-26-21

CHECK

01.1

Page 501

Nov 01/02

REPAIR – GENERAL1. Content

- A. Repair, refinish, and replacement procedures are included in separate repair sections as follows:

<u>P/N</u>	<u>NAME</u>	<u>REPAIR</u>
113T1831	HINGE FITTING ASSEMBLY	1-1
113T1815	BULKHEAD ASSEMBLY	2-1
- - -	MISCELLANEOUS PARTS	3-1
113T1851	BOND ASSEMBLY	4-1

2. Standard Practices

- A. Refer to the following standard practices overhaul manuals, as applicable, for details of procedures in individual repairs.

20-30-02 Stripping of Protective Finishes
 20-30-03 General Cleaning Procedures
 20-41-01 Decoding Table for Boeing Finish Codes
 20-41-02 Application of Chemical and Solvent Resistant Finishes
 20-43-01 Chromic Acid Anodizing
 20-50-03 Bearing Installation and Retention
 20-60-02 Finishing Materials
 20-60-04 Miscellaneous Materials

3. Materials

NOTE: Equivalent substitutes may be used.

- A. Enamel -- BMS 10-60, type 2 gloss according to operator's standard color scheme (Ref 20-60-02)
 -- BMS 10-60, BAC707 gray gloss (Ref 20-60-02)
- B. Primer -- BMS 10-11, type 1 (Ref 20-60-02)
 -- BMS 10-79, type 2 (Ref 20-60-02)
- C. Sealant -- BMS 5-95, Class B (Ref 20-60-04)

57-26-21

REPAIR-GENERAL

01.101

Page 601

Apr 01/88

4. Dimensioning Symbols

A. Standard True Position Dimensioning Symbols used in applicable repair procedures are shown in Fig. 601.

—	STRAIGHTNESS	\oplus	THEORETICAL EXACT POSITION OF A FEATURE (TRUE POSITION)
\square	FLATNESS	\varnothing	DIAMETER
\perp	PERPENDICULARITY (OR SQUARENESS)	S \varnothing	SPHERICAL DIAMETER
//	PARALLELISM	R	RADIUS
\bigcirc	ROUNDNESS	SR	SPHERICAL RADIUS
\bigcirc	CYLINDRICITY	()	REFERENCE
\frown	PROFILE OF A LINE	BASIC (BSC) OR	A THEORETICALLY EXACT DIMENSION USED TO DESCRIBE SIZE, SHAPE OR LOCATION OF A FEATURE FROM WHICH PERMISSIBLE VARIATIONS ARE ESTABLISHED BY TOLERANCES ON OTHER DIMENSIONS OR NOTES.
\triangle	PROFILE OF A SURFACE	DIM	
\odot	CONCENTRICITY	-A-	DATUM
\equiv	SYMMETRY	\textcircled{M}	MAXIMUM MATERIAL CONDITION (MMC)
\sphericalangle	ANGULARITY	\textcircled{L}	LEAST MATERIAL CONDITION (LMC)
\nearrow	RUNOUT	\textcircled{S}	REGARDLESS OF FEATURE SIZE (RFS)
\nearrow	TOTAL RUNOUT	\textcircled{P}	PROJECTED TOLERANCE ZONE
\sqsubset	COUNTERBORE OR SPOTFACE	FIM	FULL INDICATOR MOVEMENT
\sphericalangle	COUNTERSINK		

EXAMPLES

$\text{—} \quad 0.002$	STRAIGHT WITHIN 0.002	$\textcircled{\odot} \text{ C } \varnothing \quad 0.0005$	CONCENTRIC TO C WITHIN 0.0005 DIAMETER
$\perp \text{ B } \quad 0.002$	PERPENDICULAR TO B WITHIN 0.002	$\equiv \text{ A } \quad 0.010$	SYMMETRICAL WITH A WITHIN 0.010
$// \text{ A } \quad 0.002$	PARALLEL TO A WITHIN 0.002	$\sphericalangle \text{ A } \quad 0.005$	ANGULAR TOLERANCE 0.005 WITH A
$\bigcirc \quad 0.002$	ROUND WITHIN 0.002	$\oplus \text{ B } \varnothing \quad 0.002 \text{ (S)}$	LOCATED AT TRUE POSITION WITHIN 0.002 DIA RELATIVE TO DATUM B, REGARDLESS OF FEATURE SIZE
$\bigcirc \quad 0.010$	CYLINDRICAL SURFACE MUST LIE BETWEEN TWO CONCENTRIC CYLINDERS, ONE OF WHICH HAS A RADIUS 0.010 INCH GREATER THAN THE OTHER	$\perp \text{ A } \varnothing \quad 0.010 \text{ (M)}$ 0.510 (P)	AXIS IS TOTALLY WITHIN A CYLINDER OF 0.010-INCH DIAMETER, PERPENDICULAR TO, AND EXTENDING 0.510-INCH ABOVE, DATUM A, MAXIMUM MATERIAL CONDITION
$\frown \text{ A } \quad 0.006$	EACH LINE ELEMENT OF THE SURFACE AT ANY CROSS SECTION MUST LIE BETWEEN TWO PROFILE BOUNDARIES 0.006 INCH APART RELATIVE TO DATUM PLANE A	2.000	EXACT DIMENSION IS 2.000
$\triangle \text{ A } \quad 0.020$	SURFACES MUST LIE WITHIN PARALLEL BOUNDARIES 0.02 INCH APART AND EQUALLY DISPOSED ABOUT TRUE PROFILE	OR 2.000 BSC	
(NOTE THAT $\triangle \text{ A } \quad 0.020$ MAY ALSO APPEAR AS $\triangle \quad 0.020 \text{ A}$)			

True Position Dimensioning Symbols
Figure 601

57-26-21

REPAIR-GENERAL

01.1

Page 602

Apr 01/88

HINGE FITTING ASSEMBLY - REPAIR 1-1

113T1831-1 thru -4 and -17 thru -20

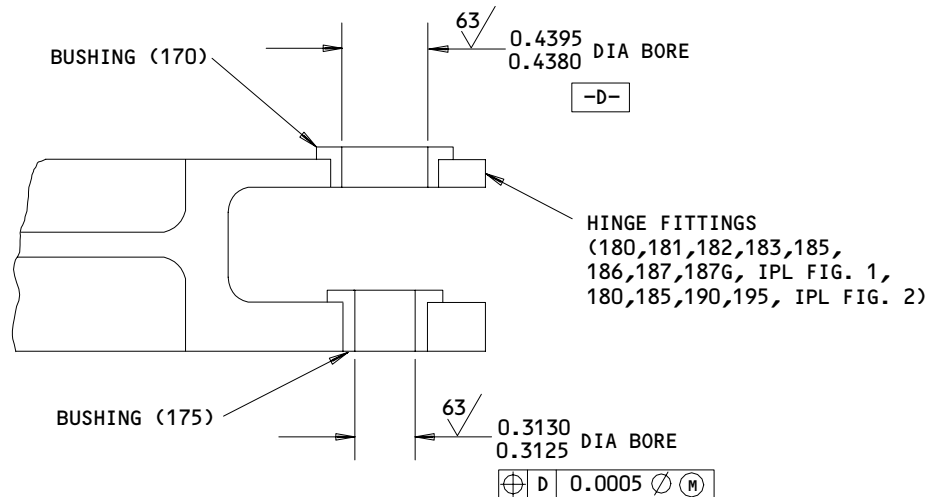
NOTE: Refer to REPAIR-GENERAL for list of applicable standard practices.

1. Bushing (170, 175, IPL Fig. 1; 170, 175, IPL Fig. 2) Replacement

- A. Remove bushings.
- B. Install bushings per 20-50-03 using wet BMS 5-95 sealant.
- C. Machine bushings as shown in Fig. 601.
- D. Fillet seal entire periphery of bushing flanges with BMS 5-95, Class B sealant.

2. Refinish

- A. Hinge Fitting (180, 180A, 182, 182A, 185, 185A, 187, 187G, IPL Fig. 1; 180, 185, 190, 195, IPL Fig. 2) -- Chromic acid anodize, Type 1, and apply one coat BMS 10-11, Type 1 primer (F-18.13). Apply BMS 10-60 BAC 707 gray gloss enamel (SRF 14.9813). Omit primer and finish in holes. Material: Aluminum alloy.



ALL DIMENSIONS ARE IN INCHES

113T1831-1 THRU -4, -17 THRU -20

Hinge Fitting Repair
 Figure 601

57-26-21

REPAIR 1-1

01.1

Page 601

Nov 01/02

BULKHEAD ASSEMBLY - REPAIR 2-1

113T1815-1, -2, -5, -6

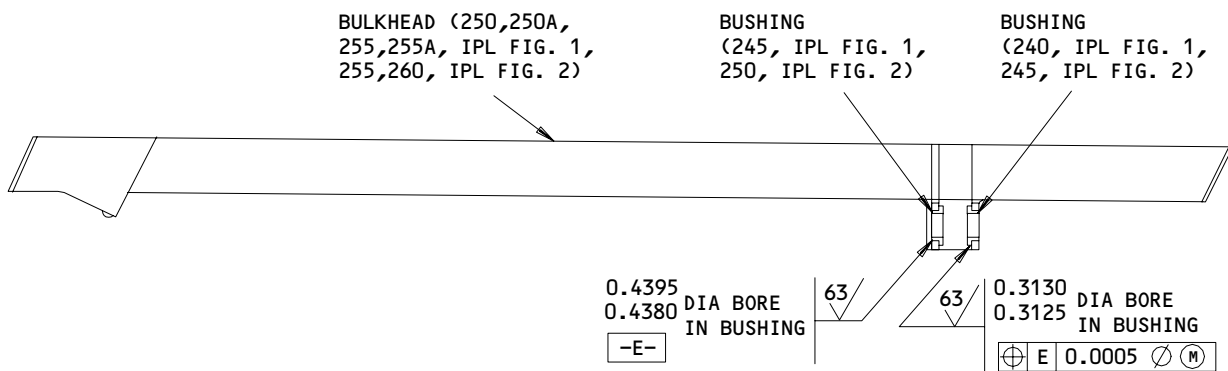
NOTE: Refer to REPAIR-GENERAL for list of applicable standard practices.

 1. Bushing (240, 245, IPL Fig. 1, 245, 250, IPL Fig. 2) Replacement

- A. Remove bushing.
- B. Install bushings per 20-50-03 using wet BMS 5-95 sealant.
- C. Machine bushings as shown in Fig. 601.
- D. Fillet seal entire periphery of bushing flanges with BMS 5-95, Class B sealant.

 2. Refinish

- A. Bulkhead (250, 250A, 255, 255A, IPL Fig. 1; 255, 260, IPL Fig. 2) -- Chromic acid anodize, type 1, and apply one coat BMS 10-11, type 1 primer (F-18.13). Omit primer in holes. Apply BMS 10-60 BAC 707 gray, gloss enamel (SRF-14.9813). Omit finish on bushing holes and flanges.
Material: Aluminum alloy.



ALL DIMENSIONS ARE IN INCHES

113T1815-1,-2,-5,-6

 Bulkhead Repair
 Figure 601

57-26-21

REPAIR 2-1

01.101

Page 601

Apr 01/88



MISCELLANEOUS PARTS - REPAIR 3-1

1. Repair of parts listed in Fig. 601 consists of restoration of the original finish.

57-26-21

REPAIR 3-1

01.101

Page 601

Apr 01/91

NOTE: Refer to REPAIR-GENERAL for list of applicable standard practices.

IPL FIG. & ITEM	MATERIAL	FINISH
<u>Fig. 1</u>		
Fairing Assembly (1C,1E,1H,1K,1L,5C, 5E,5H,5K)		Apply one coat BMS 10-79, Type 2 primer and BMS 10-60, Type 2, BAC 707 gray gloss enamel to exterior surface and trimmed edges (F-19.40).
Fairing Assembly (1B,1D,1F,1G,1J,5B, 5D,5F,5G,5J)		Apply one coat BMS 10-79, Type 2 primer and BMS 10-60, Type 2 enamel per operators standard color scheme to exterior surface and trimmed edges (F-19.41-XXXX).
Bulkhead (110,115)	Al Alloy	Chemical treat surface, colored coating. Apply one coat BMS 10-11, Type 1 primer (F-18.06). Apply BMS 10-60, BAC 707 gray gloss enamel (SRF-14.9813).
Retainers (30,35, 45,50)	Al Alloy	Chromic acid anodize, Type 1, and apply one coat BMS 10-11, Type 1 primer (F-18.13). Apply BMS 10-60 BAC 707 gray gloss enamel (SRF-14.9813).
Grounding Clip (216)	Al Alloy	Chromic acid anodize, Type 1, and apply one coat BMS 10-11, Type 1 primer (F-18.13). Apply BMS 10-60, BAC 707 gray gloss enamel (SRF-14.9813).
Access Doors (210A,212)	Al Alloy	Chemical treat all surfaces, colored film (F-17.07). Apply one coat BMS 10-11, Type 1 primer on inside surface (F-20.02). Apply one coat BMS 10-79, Type 2 primer on outside surface (F-19.46).
Bathtub Fitting (105)	Al Alloy	Chromic acid anodize, Type 1, and apply one coat BMS 10-11, Type 1 primer (F-18.13). Apply BMS 10-60, BAC 707 gray gloss enamel, except omit finish from holes (SRF-14.9813).

Refinish Details
 Figure 601 (Sheet 1)

57-26-21

REPAIR 3-1

01.1

Page 602

Nov 01/02


BOEING
 COMPONENT
 MAINTENANCE MANUAL

IPL FIG. & ITEM	MATERIAL	FINISH
<u>Fig. 2</u>		
Fairing Assembly (1A,1D,1F,1G,5A,5D, 5F,5G)		Apply one coat BMS 10-79, Type 2 primer and BMS 10-60, Type 2, BAC 707 gray gloss enamel to exterior surface and trimmed edges (F-19.40).
Fairing Assembly (1,1B,1C,1E,5,5B, 5C,5E)		Apply one coat BMS 10-79, Type 2 primer and BMS 10-60, Type 2 enamel per operators standard color scheme to exterior surface and trimmed edges (F-19.41-XXXX).
Bulkhead (120,125)	Al Alloy	Chemical treat surface, colored coating. Apply one coat BMS 10-11, Type 1 primer (F-18.06). Apply BMS 10-60, BAC 707 gray gloss enamel (SRF-14.9813).
Retainers (30,31, 31A,32,33,33A,35, 36,36A,37,38,38A, 45,45A,50,50A)	Al Alloy	Chromic acid anodize, Type 1, and apply one coat BMS 10-11, Type 1 primer (F-18.13). Apply BMS 10-60 BAC 707 gray gloss enamel (SRF-14.9813).
Access Doors (200, 205)	Al Alloy	Chemical treat all surfaces, colored film (F-17.07). Apply one coat BMS 10-11, Type 1 primer on inside surface (F-20.02). Apply one coat BMS 10-79, Type 2 primer on outside surface (F-19.46).
Bathtub Fitting (105)	Al Alloy	Chromic acid anodize, Type 1, and apply one coat BMS 10-11, Type 1 primer (F-18.13). Apply BMS 10-60, BAC 707 gray gloss enamel, except omit finish from holes (SRF-14.9813).
Grounding Clip (223)	Al Alloy	Chromic acid anodize, Type 1, and apply one coat BMS 10-11, Type 1 primer (F-18.13). Apply BMS 10-60, BAC 707 gray gloss enamel (SRF-14.9813).

Refinish Details
 Figure 601 (Sheet 2)

57-26-21

REPAIR 3-1

01.1

Page 603

Nov 01/02



ASSEMBLY

1. Assembly

- A. Use standard industry practices for assembly of this unit, with additional procedures listed below.
- B. Install rivets (125, 235, IPL Fig. 1; 115, 240, IPL Fig. 2) and check that resistance is less than 0.001 ohm per 20-11-03. Check conductive coating per 20-10-06.
- C. Install bonding jumper (55, IPL Fig. 1; 55, IPL Fig. 2) and check that resistance is less than 0.010 ohm per 20-11-03.

57-26-21

ASSEMBLY
Page 701
Nov 01/02

01.1



ILLUSTRATED PARTS LIST

1. This section lists and illustrates replaceable or repairable component parts. The Illustrated Parts Catalog contains a complete explanation of the Boeing part numbering system.
2. Indentures show parts relationships as follows:

Assembly

Detail Parts for Assembly

Subassembly

Attaching Parts for Subassembly

Detail Parts for Subassembly

Detail Installation Parts (Included only if installation parts may be returned to shop as part of assembly)

3. One use code letter (A, B, C, etc.) is assigned in the EFF CODE column for each variation of top assembly. All listed parts are used on all top assemblies except when limitations are shown by use code letter opposite individual part entries.
4. Letter suffixes (alpha-variants) are added to item numbers for optional parts, Service Bulletin modification parts, configuration differences (except left- and right-hand parts), product improvement parts, and parts added between two sequential item numbers. The alpha-variant is not shown on illustrations when appearance and location of all variants of the part is the same.
5. Service Bulletin modifications are shown by the notations PRE SB XXXX and POST SB XXXX.
 - A. When a new top assembly part number is assigned by Service Bulletin, the notations appear at the top assembly level only. The configuration differences at detail part level are then shown by use code letter.
 - B. When the top assembly part number is not changed by the Service Bulletin, the notations appear at the detail part level.

6. Parts Interchangeability

Optional
(OPT)

The parts are optional to and interchangeable with other parts having the same item number.

Supersedes, Superseded By
(SUPSDS, SUPSD BY)

The part supersedes and is not interchangeable with the original part.

Replaces, Replaced By
(REPLS, REPLD BY)

The part replaces and is interchangeable with, or is an alternate to, the original part.

57-26-21

ILLUSTRATED PARTS LIST

01 Page 1001

Jul 10/83

7. Boeing Proprietary Color-Coded Parts

- A. Color-coded parts are identified with an alpha suffix. These entries represent parts that are of the same configuration, but have different finishes. Orders for color-coded parts should include the registry number of the airplane for which the parts are ordered.

57-26-21

ILLUSTRATED PARTS LIST
01.1 Page 1002
Nov 01/02


BOEING
 COMPONENT
 MAINTENANCE MANUAL
VENDORS

08524 DEUTSCH FASTENER CORP SEE CODE V97928

10630 ANILLO INDUSTRIES, INCORPORATED
 2090 NORTH GLASSELL
 ORANGE, CALIFORNIA 92667
 FORMERLY WESTERN WASHER DIV OF SENG CO V87487

15653 FAIRCHILD FASTENERS KAYNAR PRODUCTS DIV
 800 S STATE COLLEGE BLVD
 FULLERTON, CALIFORNIA 92831-3001
 FORMERLY VK6405 MICRODOT AEROSP LTD; FORMERLY KAYNAR TECH
 KAYNAR DIV

5M902 FAIRCHILD IND INC FAIRCHILD AEROSPACE FASTENER DIV
 3016 W LOMITA BLVD
 TORRANCE, CALIFORNIA 90505-5103
 FMLY IN REDONDO BEACH, CALIF

52825 HOFFMAN CAMERA CORP
 19 GRAND AVENUE
 FARMINGTON, NEW YORK 11735-6315

52828 REPUBLIC FASTENER MFG CORP
 1300 RANCHO CONEJO BLVD
 NEWBURY PARK, CALIFORNIA 91320-1405
 FORMERLY IN SYLMAR, CALIFORNIA

56878 SPS TECHNOLOGIES INC AEROSPACE AND INDUSTRIAL PRODUCTS DIV
 HIGHLAND AVENUE
 JENKINTOWN, PENNSYLVANIA 19046
 FORMERLY STANDARD PRESSED STEEL

60516 WEST COAST AEROSPACE INC
 812 MIRAFLORES STREET
 SAN PEDRO, CALIFORNIA 90731-1439

71087 BOOTS ACFT NUT DIV TOWNSEND CO SEE TEXTRON INC CHERRY
 FASTENER TOWNSEND DIV V11815

72962 HARVARD INDUSTRIES INC
 3 WERNER WAY SUITE 210
 LEBANON, NEW JERSEY 08833
 FORMERLY AMERACE CORP ESNA DIV
 FORMERLY ELASTIC STOP NUT IN UNION, NJ

73197 HI-SHEAR TECHNOLOGY CORP
 2600 SKYPARK DRIVE
 TORRANCE, CALIFORNIA 90509

57-26-21

 ILLUSTRATED PARTS LIST
 01.1 Page 1003
 Nov 01/02

VENDORS

80539 SPS TECHNOLOGIES INC AEROSPACE PRODUCTS DIV
2701 SOUTH HARBOR BOULEVARD PO BOX 1259
SANTA ANA, CALIFORNIA 92702-1259
FORMERLY NUTT-SHEL DIV OF SPC WESTERN CO V80539
AND STANDARD PRESSED STEEL WESTERN DIV V17279

9N513 VOI SHAN/CHATSWORTH DIV OF VSI CORP SUB OF FAIRCHILD IND
CHATSWORTH, CALIFORNIA 91311-5013
COMPANY NO LONGER WISHES TO BE CONSIDERED FOR FED CONTRCTG

92215 FAIRCHILD IND INC FAIRCHILD AEROSPACE FASTENER DIV
3010 W LOMITA BLVD
TORRANCE, CALIFORNIA 90505-5102
FORMERLY VOI-SHAN IN CULVER CITY, CALIF

97928 HUCK INTL INC
3969 PARAMOUNT BLVD
LAKEWOOD, CALIFORNIA 90712-4193

57-26-21

ILLUSTRATED PARTS LIST
01.1 Page 1004
Nov 01/02


BOEING
 COMPONENT
 MAINTENANCE MANUAL

PART NUMBER	AIRLINE PART NO.	FIG.	ITEM	TTL REQ
AN960-10L		1	70	6
		2	70	6
AN960PD8		1	90	2
		2	90	2
AN960XC10L		1	15	35
		2	15	35
AS46-4		1	164	8
BACB28AM07B013A		1	170	2
		1	245	1
		2	170	2
		2	250	1
BACB28AP05P013		1	240	1
		2	245	1
BACB28AP05P023		1	175	2
		2	175	2
BACB30LR3-3		1	213	7
		2	210	7
BACB30LR3-4		1	213A	1
		2	212	1
BACB30MB6A4		1	60	2
		2	60	2
BACB30NN3K2		1	10A	35
		2	10A	35
BACC30AG8		2	160	8
BACC30X6		1	65	2
		2	65	2
BACF3F014J020NN		1	100	4
		2	100	2
BACJ40A20-4		1	55	1
		2	55	1
BACN10JC08		1	95	2
		2	95	2
BACN10JC3		1	20	35
		2	20	35
BACN10KE3B2		1	214	8
		2	220	8
BACN10MT4		1	164G	8
BACR15BA3AD		1	215A	16
		2	215	16
BACR15BA6AD		1	120	8
		1	230	15
		2	110	8
		2	235	15
BACR15FT8AD		1	107	2
		2	107	2

57-26-21

ILLUSTRATED PARTS LIST

01.1

Page 1005

Nov 01/02

PART NUMBER	AIRLINE PART NO.	FIG.	ITEM	TTL REQ
BACR15FT8KE		1	80	2
		2	80	2
BACS12ER08K12		1	85	2
		2	85	2
BACS40R30B36F		1	162	2
BACS40R30C38F		1	163	2
		2	165	2
BACW10AU4		1	164	8
BRFR220A3-2		1	214	8
		2	220	8
BRH10A08		1	95	2
		2	95	2
BRH10A3		1	20	35
		2	20	35
F51750-3-2		1	214	8
		2	220	8
HL1187-6		1	65	2
		2	65	2
HL448UC6-4		1	60	2
		2	60	2
HL82-8APBW		2	160	8
HL87-6		1	65	2
		2	65	2
H10-08BAC		1	95	2
		2	95	2
H10-3BAC		1	20	35
		2	20	35
H19700P4		1	164G	8
NAS1399MW6-4		1	125	2
		1	235	2
		2	115	2
		2	240	2
NAS1805-3L		2	20A	35
NAS6604-6		1	155C	4
		2	150B	4
NAS6604-7		1	160C	4
		2	155B	4
NAS6604-8		1	155B	4
NAS6604-9		1	160B	4
NS103191-02-2		1	214	8
		2	220	8
NS202101-02		1	20	35
		2	20	35

57-26-21

 ILLUSTRATED PARTS LIST
 01.1 Page 1006
 Nov 01/02


BOEING
 COMPONENT
 MAINTENANCE MANUAL

PART NUMBER	AIRLINE PART NO.	FIG.	ITEM	TTL REQ
NS202101-82		1	95	2
		2	95	2
RMF9213-2-3		1	214	8
		2	220	8
RMLH9075-3W		1	20	35
		2	20	35
RMLH9075-82W		1	95	2
		2	95	2
TLN1020-4N		1	164G	8
T6S1032J		1	20	35
T6S1032J		2	20	35
T6S832J		1	95	2
		2	95	2
VN303A02		1	20	35
		2	20	35
VN303A82		1	95	2
		2	95	2
WC4486-4		1	60	2
		2	60	2
113T1803-1		1	216	1
		2	223	1
113T1811-10		1	50	1
		2	50	1
113T1811-11		1	43	1
		2	43	1
113T1811-15SP		1	1B	RF
113T1811-16SP		1	5B	RF
113T1811-17		1	1C	RF
113T1811-18		1	5C	RF
113T1811-19SP		1	1D	RF
		2	1	RF
113T1811-20SP		1	5D	RF
		2	5	RF
113T1811-21		1	1E	RF
		2	1A	RF
113T1811-22		1	5E	RF
		2	5A	RF
113T1811-23SP		1	1F	RF
		2	1B	RF
113T1811-24SP		1	5F	RF
		2	5B	RF
113T1811-25		1	1G	RF
		2	1C	RF
113T1811-26		1	5G	RF
		2	5C	RF

57-26-21

 ILLUSTRATED PARTS LIST
 01.1 Page 1007
 Nov 01/02

PART NUMBER	AIRLINE PART NO.	FIG.	ITEM	TTL REQ
113T1811-27		1	1H	RF
		2	1D	RF
113T1811-28		1	5H	RF
		2	5D	RF
113T1811-29		2	26	1
113T1811-3		1	110	1
		2	120	1
113T1811-30		2	26G	1
113T1811-31		2	28	1
113T1811-32		2	28G	1
113T1811-33		2	27	1
113T1811-34		2	27G	1
113T1811-35		2	31	1
113T1811-36		2	36	1
113T1811-37		2	32	1
113T1811-38		2	37	1
113T1811-39		2	33	1
113T1811-4		1	115	1
		2	125	1
113T1811-40		2	38	1
113T1811-41		2	45A	1
113T1811-42		2	50A	1
113T1811-43		2	27A	1
113T1811-44		2	27H	1
113T1811-45		1	1J	RF
		2	1E	RF
113T1811-46		1	5J	RF
		2	5E	RF
113T1811-47		2	26A	1
113T1811-49		2	28A	1
113T1811-5		1	25	1
		2	25	1
113T1811-50		2	28H	1
113T1811-5001		1	7	1
113T1811-5002		1	9	1
113T1811-5003		1	7A	1
113T1811-5004		1	9A	1
113T1811-5005		1	7B	1
113T1811-5006		1	9B	1
113T1811-51		1	1K	RF
		2	1F	RF
113T1811-52		1	5K	RF
		2	5F	RF

57-26-21

 ILLUSTRATED PARTS LIST
 01.1 Page 1008
 Nov 01/02


BOEING
 COMPONENT
 MAINTENANCE MANUAL

PART NUMBER	AIRLINE PART NO.	FIG.	ITEM	TTL REQ
113T1811-57		2	31A	1
113T1811-58		2	36A	1
113T1811-59		2	33A	1
113T1811-6		1	40	1
		2	40	1
113T1811-60		2	38A	1
113T1811-61		2	27B	1
113T1811-62		2	27J	1
113T1811-63G		1	1L	RF
		2	1G	RF
113T1811-64G		1	5L	RF
		2	5G	RF
113T1811-7		1	30	1
		2	30	1
113T1811-8		1	35	1
		2	35	1
113T1811-9		1	45	1
		2	45	1
113T1812-17		1	161	4
113T1813-3		1	210A	1
		2	200	1
113T1813-4		1	212	1
		2	205	1
113T1815-1		1	220	1
113T1815-2		1	225	1
113T1815-3		1	250	1
113T1815-4		1	255	1
113T1815-5		1	220A	1
		2	225	1
113T1815-6		1	225A	1
		2	230	1
113T1815-7		1	250A	1
		2	255	1
113T1815-8		1	255A	1
		2	260	1
113T1817-1		1	75	1
		2	75	1
113T1817-4		1	105	1
		2	105	1
113T1831-1		1	135	1
113T1831-10		1	182	1
113T1831-11		1	185	1
113T1831-12		1	187	1
113T1831-17		1	137	1
		2	130	1
113T1831-18		1	142	1
		2	135	1

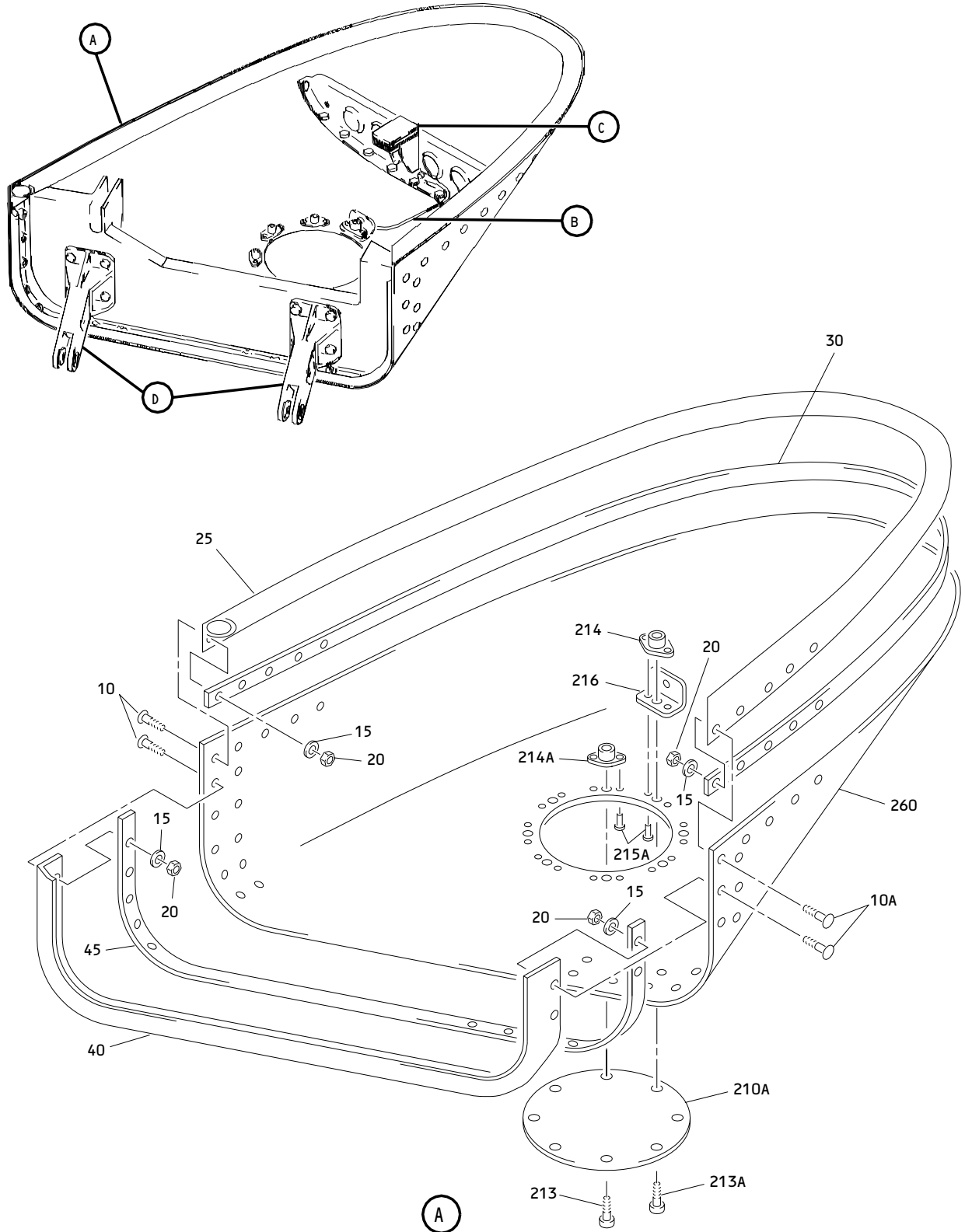
57-26-21

 ILLUSTRATED PARTS LIST
 01.1 Page 1009
 Nov 01/02

PART NUMBER	AIRLINE PART NO.	FIG.	ITEM	TTL REQ
113T1831-19		1	147	1
		2	140	1
113T1831-2		1	140	1
113T1831-20		1	153	1
		2	145	1
113T1831-25		1	181	
		1	180A	1
		2	180	1
113T1831-26		1	183	
		1	182A	1
		2	185	1
113T1831-27		1	186	
		1	185A	1
		2	190	1
113T1831-28		1	187G	1
		2	195	1
113T1831-3		1	145	1
113T1831-4		1	150	1
113T1831-9		1	180	1
113T1851-1		1	260	1
		2	265	1
113T1851-2		1	265	1
		2	270	1
52LH6073-048		1	164G	8
69308-6A4		1	60	2
		2	60	2
96-02		1	20	35
		2	20	35
96-82		1	95	2
		2	95	2

57-26-21

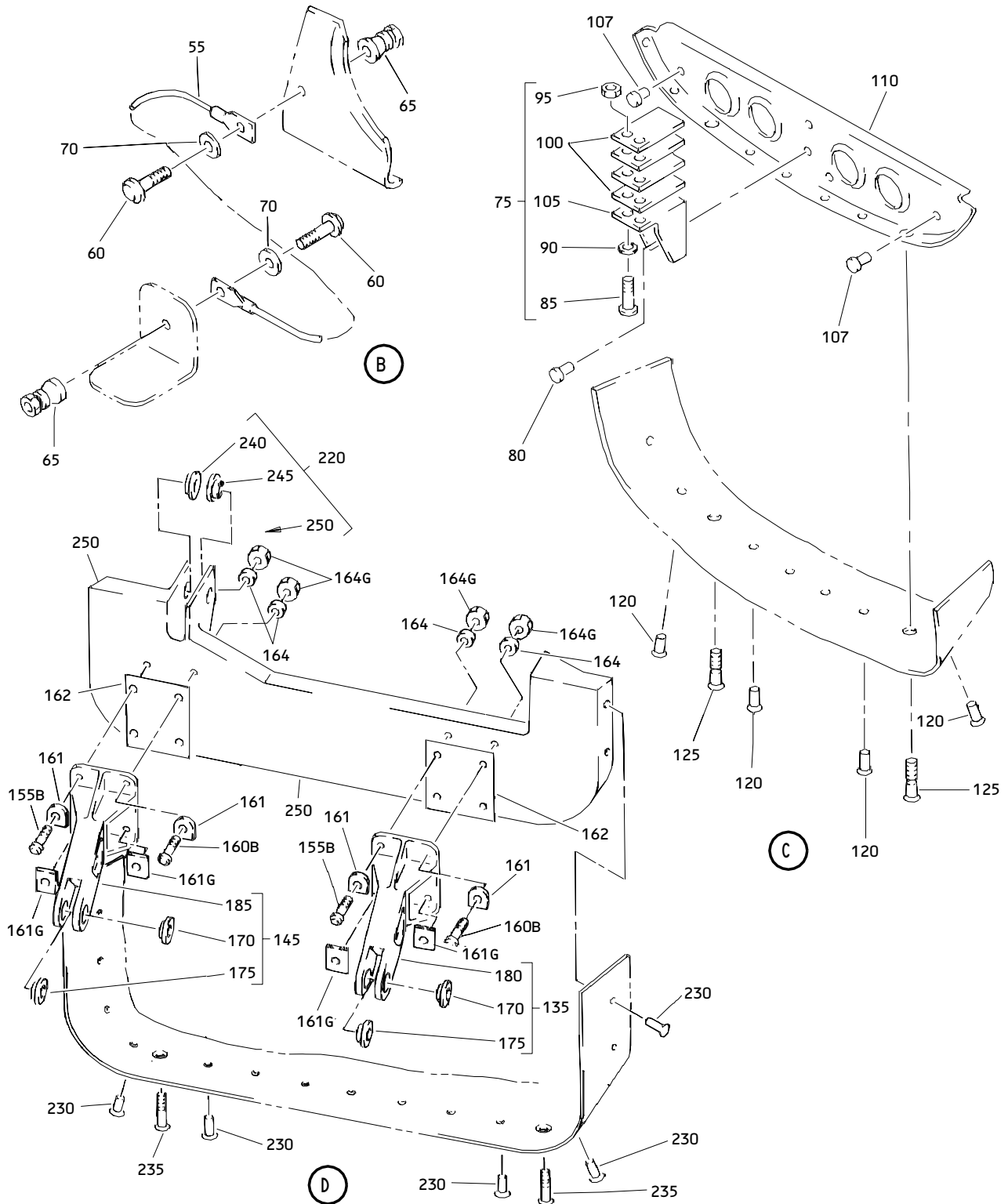
 ILLUSTRATED PARTS LIST
 01.1 Page 1010
 Nov 01/02



Outboard Trailing Edge Flap No. 1 Forward Fairing Assembly
Figure 1 (Sheet 1)

57-26-21

ILLUSTRATED PARTS LIST
01.1 Page 1011
Nov 01/02



Outboard Trailing Edge Flap No. 1 Forward Fairing Assembly
Figure 1 (Sheet 2)

57-26-21

ILLUSTRATED PARTS LIST
01.1 Page 1012
Nov 01/02


BOEING
 COMPONENT
 MAINTENANCE MANUAL

FIG. & ITEM	PART NO.	AIRLINE PART NUMBER	NOMENCLATURE 1234567	EFF CODE	QTY PER ASSY
01-					
-1	113T1811-1SP		DELETED		
-1A	113T1811-13SP		DELETED		
-1B	113T1811-15SP		FAIRING ASSY-OUTBD TE FLAP NO. 1 FWD (LH)	A	RF
-1C	113T1811-17		FAIRING ASSY-OUTBD TE FLAP NO. 1 FWD (VARIABLE) (LH)	C	RF
-1D	113T1811-19SP		FAIRING ASSY-OUTBD TE FLAP NO. 1 FWD (LH) (FOR DETAILS SEE FIG. 2)	E	RF
-1E	113T1811-21		FAIRING ASSY-OUTBD TE FLAP NO. 1 FWD (VARIABLE) (LH) (FOR DETAILS SEE FIG. 2)	F	RF
-1F	113T1811-23SP		FAIRING ASSY-OUTBD TE FLAP NO. 1 FWD (LH) (FOR DETAILS SEE FIG. 2)	J	RF
-1G	113T1811-25		FAIRING ASSY-OUTBD TE FLAP NO. 1 FWD (VARIABLE) (LH) (FOR DETAILS SEE FIG. 2)	L	RF
-1H	113T1811-27		FAIRING ASSY-OUTBD TE FLAP NO. 1 FWD (LH) (FOR DETAILS SEE FIG. 2)	N	RF
-1J	113T1811-45		FAIRING ASSY-OUTBD TE FLAP NO. 1 FWD (VARIABLE) (LH) (FOR DETAILS SEE FIG. 2)	Q	RF
R -1K	113T1811-51		FAIRING ASSY-OUTBD TE FLAP NO. 1 FWD (LH) (FOR DETAILS SEE FIG. 2)	S	RF
R -1L	113T1811-63G		FAIRING ASSY-OUTBD TE FLAP NO. 1 FWD (LH) (FOR DETAILS SEE FIG. 2)	U	RF
-5	113T1811-2SP		DELETED		
-5A	113T1811-14SP		DELETED		
-5B	113T1811-16SP		FAIRING ASSY-OUTBD TE FLAP NO. 1 FWD (RH)	B	RF
-5C	113T1811-18		FAIRING ASSY-OUTBD TE FLAP NO. 1 FWD (VARIABLE) (RH)	D	RF
-5D	113T1811-20SP		FAIRING ASSY-OUTBD TE FLAP NO. 1 FWD (RH) (FOR DETAILS SEE FIG. 2)	G	RF
-5E	113T1811-22		FAIRING ASSY-OUTBD TE FLAP NO. 1 FWD (VARIABLE) (RH) (FOR DETAILS SEE FIG. 2)	H	RF
-5F	113T1811-24SP		FAIRING ASSY-OUTBD TE FLAP NO. 1 FWD (RH) (FOR DETAILS SEE FIG. 2)	K	RF

57-26-21

 ILLUSTRATED PARTS LIST
 01.1 Page 1013
 Nov 01/02

FIG. & ITEM	PART NO.	AIRLINE PART NUMBER	NOMENCLATURE 1234567	EFF CODE	QTY PER ASSY
01- -5G	113T1811-26		FAIRING ASSY-OUTBD TE FLAP NO. 1 FWD (VARIABLE) (RH) (FOR DETAILS SEE FIG. 2)	M	RF
-5H	113T1811-28		FAIRING ASSY-OUTBD TE FLAP NO. 1 FWD (RH) (FOR DETAILS SEE FIG. 2)	P	RF
-5J	113T1811-46		FAIRING ASSY-OUTBD TE FLAP NO. 1 FWD (VARIABLE) (RH) (FOR DETAILS SEE FIG. 2)	R	RF
R -5K	113T1811-52		FAIRING ASSY-OUTBD TE FLAP NO. 1 FWD (RH) (FOR DETAILS SEE FIG. 2)	T	RF
R -5L	113T1811-64G		FAIRING ASSY-OUTBD TE FLAP NO. 1 FWD (RH) (FOR DETAILS SEE FIG. 2)	V	RF
-7	113T1811-5001		.FAIRING ASSY- (REPLD BY ITEM 7A)	A,C	1
-7A	113T1811-5003		.FAIRING ASSY- (REPLS ITEM 7) (REPLD BY ITEM 7B)	A,C	1
-7B	113T1811-5005		.FAIRING ASSY- (REPLS ITEM 7A)	A,C	1
-9	113T1811-5002		.FAIRING ASSY- (REPLD BY ITEM 9A)	B,D	1
-9A	113T1811-5004		.FAIRING ASSY- (REPLS ITEM 9) (REPLD BY ITEM 9B)	B,D	1
-9B	113T1811-5006		.FAIRING ASSY- (REPLS ITEM 9A)	B,D	1
10	BACB30NN3K4		DELETED		
10A	BACB30NN3K2		..BOLT	A-D	35
15	AN960XC10L		..WASHER	A-D	35

57-26-21

 ILLUSTRATED PARTS LIST
 01.1 Page 1014
 Nov 01/02

BOEING
 COMPONENT
 MAINTENANCE MANUAL

FIG. & ITEM	PART NO.	AIRLINE PART NUMBER	NOMENCLATURE 1234567	EFF CODE	QTY PER ASSY
01-20	H10-3BAC		..NUT- (V15653) (SPEC BACN10JC3) (OPT NS202101-02 (V80539)) (OPT RMLH9075-3W (V72962)) (OPT T6S1032J (V71087)) (OPT VN303A02 (V92215)) (OPT 96-02 (V80539)) (OPT BRH10A3 (V52828))	A-D	35
25	113T1811-5		..SEAL- (MFD FROM 10-60754-319 62.00 IN. EXTR RUBBER)	A-D	1
30	113T1811-7		..RETAINER	A,C	1
-35	113T1811-8		..RETAINER	B,D	1
40	113T1811-6		..SEAL- (MFD FROM EXTR RUBBER 10-60754-336 36.00 IN.)	A,C	1
-43	113T1811-11		..SEAL- (MFD FROM EXTR RUBBER 10-60754-336 36.00 IN.)	B,D	1
45	113T1811-9		..RETAINER	A,C	1
-50	113T1811-10		..RETAINER	B,D	1
55	BACJ40A20-4		..JUMPER	A-D	1

57-26-21

ILLUSTRATED PARTS LIST
 01.1 Page 1015
 Nov 01/02

FIG. & ITEM	PART NO.	AIRLINE PART NUMBER	NOMENCLATURE 1234567	EFF CODE	QTY PER ASSY
01-60	HL448UC6-4		..BOLT- (V56878) (SPEC BACB30MB6A4) (OPT HL448UC6-4 (V73197)) (OPT HL448UC6-4 (V92215)) (OPT HL448UC6-4 (V97928)) (OPT 69308-6A4 (V56878)) (OPT HL448UC6-4 (V80539)) (OPT HL448UC6-4 (V08524)) (OPT HL448UC6-4 (V9N513)) (OPT WC4486-4 (V60516))	A-D	2
65	HL1187-6		..COLLAR- (V73197) (SPEC BACC30X6) (OPT HL87-6 (V73197)) (OPT HL87-6 (V92215)) (OPT HL1187-6 (V56878)) (OPT HL1187-6 (V92215)) (OPT HL87-6 (V56878)) (OPT HL1187-6 (V5M902))	A-D	2

57-26-21

 ILLUSTRATED PARTS LIST
 01.1 Page 1016
 Nov 01/02


BOEING
 COMPONENT
 MAINTENANCE MANUAL

FIG. & ITEM	PART NO.	AIRLINE PART NUMBER	NOMENCLATURE 1234567	EFF CODE	QTY PER ASSY
01-70	AN960-10L		..WASHER -----*	A-D	6
75	113T1817-1		..FITTING ASSY ATTACHING PARTS	A-D	1
80	BACR15FT8KE		..RIVET- (SIZE DETERMINE ON INST) -----*	A-D	2
85	BACS12ER08K12		...SCREW	A-D	2
90	AN960PD8		...WASHER	A-D	2
95	H10-08BAC		...NUT- (V15653) (SPEC BACN10JC08) (OPT NS202101-82 (V80539)) (OPT RMLH9075-82W (V72962)) (OPT T6S832J (V71087)) (OPT VN303A82 (V92215)) (OPT 96-82 (V80539)) (OPT BRH10A08 (V52828))	A-D	2
100	BACF3F014J020NN		...FILLER	A-D	4
105	113T1817-4		...FITTING-BATHTUB	A-D	1
107	BACR15FT8AD		..RIVET- (SIZE DETERMINE ON INST)	A-D	2
110	113T1811-3		..BULKHEAD	A,C	1
-115	113T1811-4		..BULKHEAD ATTACHING PARTS	B,D	1
120	BACR15BA6AD		..RIVET- (SIZE DETERMINE ON INST)	A-D	8
125	NAS1399MW6-4		..RIVET -----*	A-D	2
135	113T1831-1		..FITTING ASSY-HINGE (THE GROUP OF PARTS CONSISTING OF ITEMS 135, 145, 155B, 160B, 161, 161G, 162, 164, 164G IS OPT TO THE GROUP OF PARTS CONSISTING OF PARTS 137, 147, 155C, 160C, 163, 164, 164G) (USED ON ITEM 7)	A,C	1

57-26-21

ILLUSTRATED PARTS LIST

01.1

Page 1017

Nov 01/02

FIG. & ITEM	PART NO.	AIRLINE PART NUMBER	NOMENCLATURE 1234567	EFF CODE	QTY PER ASSY
01- -137	113T1831-17		..FITTING ASSY-HINGE (THE GROUP OF PARTS CONSISTING OF ITEMS 135, 145, 155B, 160B, 161, 161G, 162, 164, 164G IS OPT TO THE GROUP OF PARTS CONSISTING OF ITEMS 137, 147, 155C, 160C, 163, 164, 164G) (USED ON ITEM 7)	A,C	1
-137A	113T1831-17		..FITTING ASSY-HINGE (USED ON ITEMS 7A, 7B) (USED WITH ITEMS 155D, 160D, 163A, 164A, 164H)	A,C	1
-140	113T1831-2		..FITTING ASSY-HINGE (THE GROUP OF PARTS CONSISTING OF ITEMS 140, 150, 155B, 160B, 161, 161G, 162, 164, 164G IS OPT TO THE GROUP OF PARTS CONSISTING OF ITEMS 142, 153, 155C, 160C, 163, 164, 164G) (USED ON ITEM 9)	B,D	1
-142	113T1831-18		..FITTING ASSY-HINGE (THE GROUP OF PARTS CONSISTING OF ITEMS 140, 150, 155B, 160B, 161, 161G, 162, 164, 164G IS OPT TO THE GROUP OF PARTS CONSISTING OF ITEMS 142, 153, 155C, 160C, 163, 164, 164G) (USED ON ITEM 9)	B,D	1
-142A	113T1831-18		..FITTING ASSY-HINGE (USED ON ITEMS 9, 9A) (USED WITH ITEMS 155D, 160D, 163A, 164A, 164H)	B,D	1

57-26-21

 ILLUSTRATED PARTS LIST
 01.1 Page 1018
 Nov 01/02


BOEING
 COMPONENT
 MAINTENANCE MANUAL

FIG. & ITEM	PART NO.	AIRLINE PART NUMBER	NOMENCLATURE 1234567	EFF CODE	QTY PER ASSY
01-145	113T1831-3		..FITTING ASSY-HINGE (THE GROUP OF PARTS CONSISTING OF ITEMS 135, 145, 155B, 160B, 161, 161G, 162, 164, 164G IS OPT TO THE GROUP OF PARTS CONSISTING OF ITEMS 137, 147, 155C, 160C, 163, 164, 164G) (USED ON ITEM 7)	A,C	1
-147	113T1831-19		..FITTING ASSY-HINGE (THE GROUP OF PARTS CONSISTING OF ITEMS 135, 145, 155B, 160B, 161, 161G, 162, 164, 164G IS OPT TO THE GROUP OF PARTS CONSISTING OF ITEMS 137, 147, 155C, 160C, 163, 164, 164G) (USED ON ITEM 7)	A,C	1
-147A	113T1831-19		..FITTING ASSY-HINGE (USED ON ITEMS 7A, 7B) (USED WITH ITEMS 155D, 160D, 163A, 164A, 164H)	A,C	1
-150	113T1831-4		..FITTING ASSY-HINGE (THE GROUP OF PARTS CONSISTING OF ITEMS 140, 150, 155B, 160B, 161, 161G, 162, 164, 164G IS OPT TO THE GROUP OF PARTS CONSISTING OF ITEMS 142, 153, 155C, 160C, 163, 164, 164G) (USED ON ITEM 9)	B,D	1

57-26-21

 ILLUSTRATED PARTS LIST
 01.1 Page 1019
 Nov 01/02

FIG. & ITEM	PART NO.	AIRLINE PART NUMBER	NOMENCLATURE 1234567	EFF CODE	QTY PER ASSY
01- -153	113T1831-20		..FITTING ASSY-HINGE (THE GROUP OF PARTS CONSISTING OF ITEMS 140, 150, 155B, 160B, 161, 161G, 162, 164, 164G IS OPT TO THE GROUP OF PARTS CONSISTING OF ITEMS 142, 153, 155C, 160C, 163, 164, 164G) (USED ON ITEM 9)	B,D	1
-153A	113T1831-20		..FITTING ASSY-HINGE (USED ON ITEMS 9A, 9B) (USED WITH ITEMS 155D, 160D, 163A, 164A, 164H) ATTACHING PARTS DELETED DELETED	B,D	1
155 155A 155B	HL10VAZ8-4 HL10VAZ8-6 NAS6604-8		..BOLT- (THE GROUP OF PARTS CONSISTING OF ITEMS 135, 145, 155B, 160B, 161, 161G, 162, 164, 164G IS OPT TO THE GROUP OF PARTS CONSISTING OF ITEMS 137, 147, 155C, 160C, 163, 164, 164G, AND THE GROUP OF PARTS CONSISTING OF ITEMS 140, 150, 155B, 160B, 161, 161G, 162, 164, 164G, IS OPT TO THE GROUP OF PARTS CONSISTING OF ITEMS 142, 153, 155C, 160C, 163, 164, 164G)	A-D	4

57-26-21

 ILLUSTRATED PARTS LIST
 01.1 Page 1020
 Nov 01/02


BOEING
 COMPONENT
 MAINTENANCE MANUAL

FIG. & ITEM	PART NO.	AIRLINE PART NUMBER	NOMENCLATURE 1234567	EFF CODE	QTY PER ASSY
01- -155C	NAS6604-6		..BOLT- (THE GROUP OF PARTS CONSISTING OF ITEMS 135, 145, 155B, 160B, 161, 161G, 162, 164, 164G IS OPT TO THE GROUP OF PARTS CONSISTING OF ITEMS 137, 147, 155C, 160C, 163, 164, 164G, AND THE GROUP OF PARTS CONSISTING OF ITEMS 140, 150, 155B, 160B, 161, 161G, 162, 164, 164G, IS OPT TO THE GROUP OF PARTS CONSISTING OF ITEMS 142, 153, 155C, 160C, 163, 164, 164G)	A-D	4
-155D	NAS6604-6		..BOLT- (USED WITH ITEMS 137A, 142A, 147A, 153A)	A-D	4
160	HL10VAZ8-5		DELETED		
160A	HL10VAZ8-7		DELETED		
160B	NAS6604-9		..BOLT- (THE GROUP OF PARTS CONSISTING OF ITEMS 135, 145, 155B, 160B, 161, 161G, 162, 164, 164G IS OPT TO THE GROUP OF PARTS CONSISTING OF ITEMS 137, 147, 155C, 160C, 163, 164, 164G, AND THE GROUP OF PARTS CONSISTING OF ITEMS 140, 150, 155B, 160B, 161, 161G, 162, 164, 164G, IS OPT TO THE GROUP OF PARTS CONSISTING OF ITEMS 142, 153, 155C, 160C, 163, 164, 164G)	A-D	4

57-26-21

 ILLUSTRATED PARTS LIST
 01.1 Page 1021
 Nov 01/02

FIG. & ITEM	PART NO.	AIRLINE PART NUMBER	NOMENCLATURE 1234567	EFF CODE	QTY PER ASSY
01- -160C	NAS6604-7		..BOLT- (THE GROUP OF PARTS CONSISTING OF ITEMS 135, 145, 155B, 160B, 161, 161G, 162, 164, 164G IS OPT TO THE GROUP OF PARTS CONSISTING OF ITEMS 137, 147, 155C, 160C, 163, 164, 164G, AND THE GROUP OF PARTS CONSISTING OF ITEMS 140, 150, 155B, 160B, 161, 161G, 162, 164, 164G, IS OPT TO THE GROUP OF PARTS CONSISTING OF ITEMS 142, 153, 155C, 160C, 163, 164, 164G)	A-D	4
-160D	NAS6604-7		..BOLT- (USED WITH ITEMS 137A, 142A, 147A, 153A)	A-D	4
161	113T1812-17		..FILLER-RADIUS (THE GROUP OF PARTS CONSISTING OF ITEMS 135, 145, 155B, 160B, 161, 161G, 162, 164, 164G IS OPT TO THE GROUP OF PARTS CONSISTING OF ITEMS 137, 147, 155C, 160C, 163, 164, 164G, AND THE GROUP OF PARTS CONSISTING OF ITEMS 140, 150, 155B, 160B, 161, 161G, 162, 164, 164G IS OPT TO THE GROUP OF PARTS CONSISTING OF ITEMS 142, 153, 155C, 160C, 163, 164, 164G)	A-D	4

57-26-21

 ILLUSTRATED PARTS LIST
 01.1 Page 1022
 Nov 01/02



BOEING
 COMPONENT
 MAINTENANCE MANUAL

FIG. & ITEM	PART NO.	AIRLINE PART NUMBER	NOMENCLATURE	EFF CODE	QTY PER ASSY
01-161G	113T1812-18		1234567 ..FILLER-RADIUS (THE GROUP OF PARTS CONSISTING OF ITEMS 135, 145, 155B, 160B, 161, 161G, 162, 164, 164G IS OPT TO THE GROUP OF PARTS CONSISTING OF ITEMS 137, 147, 155C, 160C, 163, 164, 164G, AND THE GROUP OF PARTS CONSISTING OF ITEMS 140, 150, 155B, 160B, 161, 161G, 162, 164, 164G, IS OPT TO THE GROUP OF PARTS CONSISTING OF ITEMS 142, 153, 155C, 160C, 163, 164, 164G)	A-D	4
162	BACS40R30B36F		..SHIM- (THE GROUP OF PARTS CONSISTING OF ITEMS 135, 145, 155B, 160B, 161, 161G, 162, 164, 164G IS OPT TO THE GROUP OF PARTS CONSISTING OF ITEMS 137, 147, 155C, 160C, 163, 164, 164G, AND THE GROUP OF PARTS CONSISTING OF ITEMS 140, 150, 155B, 160B, 161, 161G, 162, 164, 164G IS OPT TO THE GROUP OF PARTS CONSISTING OF ITEMS 142, 153, 155C, 160C, 163, 164, 164G)	A-D	2

57-26-21

ILLUSTRATED PARTS LIST
 01.1 Page 1023
 Nov 01/02

FIG. & ITEM	PART NO.	AIRLINE PART NUMBER	NOMENCLATURE 1234567	EFF CODE	QTY PER ASSY
01- -163	BACS40R30C38F		..SHIM- (THE GROUP OF PARTS CONSISTING OF ITEMS 135, 145, 155B, 160B, 161, 161G, 162, 164, 164G IS OPT TO THE GROUP OF PARTS CONSISTING OF ITEMS 137, 147, 155C, 160C, 163, 164, 164G, AND THE GROUP OF PARTS CONSISTING OF ITEMS 140, 150, 155B, 160B, 161, 161G, 162, 164, 164G IS OPT TO THE GROUP OF PARTS CONSISTING OF ITEMS 142, 153, 155C, 160C, 163, 164, 164G)	A-D	2
-163A	BACS40R30C38F		..SHIM- (USED WITH ITEMS 137A, 142A, 147A, 153A)	A-D	2

57-26-21

 ILLUSTRATED PARTS LIST
 01.1 Page 1024
 Nov 01/02


BOEING
 COMPONENT
 MAINTENANCE MANUAL

FIG. & ITEM	PART NO.	AIRLINE PART NUMBER	NOMENCLATURE	EFF CODE	QTY PER ASSY
01-164	AS46-4		1234567 ..WASHER- (V10630) (SPEC BACW10AU4) (OPT K19701P4 (V15653)) (OPT 53488W428 (V56878)) (OPT 6073-04 (V72962)) (OPT TLN1020L4W (V08524)) (THE GROUP OF PARTS CONSISTING OF ITEMS 135, 145, 155B, 160B, 161, 161G, 162, 164, 164G IS OPT TO THE GROUP OF PARTS CONSISTING OF ITEMS 137, 147, 155C, 160C, 163, 164, 164G, AND THE GROUP OF PARTS CONSISTING OF ITEMS 140, 150, 155B, 160B, 161, 161G, 162, 164, 164G IS OPT TO THE GROUP OF PARTS CONSISTING OF ITEMS 142, 153, 155C, 160C, 163, 164, 164G)	A-D	8
-164A	AS46-4		..WASHER- (V10630) (SPEC BACW10AU4) (OPT K19701P4 (V15653)) (OPT 53488W428 (V56878)) (OPT 6073-04 (V72962)) (OPT TLN1020L4W (V08524)) (USED WITH ITEMS 137A, 142A, 147A, 153A)	A-D	8

57-26-21

 ILLUSTRATED PARTS LIST
 01.1 Page 1025
 Nov 01/02

FIG. & ITEM	PART NO.	AIRLINE PART NUMBER	NOMENCLATURE	EFF CODE	QTY PER ASSY
01-164G	H19700P4		1234567 ..NUT- (V15653) (SPEC BACN10MT4) (OPT TLN1020-4N (V08524)) (OPT 52LH6073-048 (V72962)) (OPT 53488-428 (V56878)) (THE GROUP OF PARTS CONSISTING OF ITEMS 135, 145, 155B, 160B, 161, 161G, 162, 164, 164G IS OPT TO THE GROUP OF PARTS CONSISTING OF ITEMS 137, 147, 155C, 160C, 163, 164, 164G, AND THE GROUP OF PARTS CONSISTING OF ITEMS 140, 150, 155B, 160B, 161, 161G, 162, 164, 164G IS OPT TO THE GROUP OF PARTS CONSISTING OF ITEMS 142, 153, 155C, 160C, 163, 164, 164G)	A-D	8
-164H	H19700P4		..NUT- (V15653) (SPEC BACN10MT4) (OPT TLN1020-4N (V08524)) (OPT 52LH6073-048 (V72962)) (OPT 53488-428 (V56878)) (USED WITH ITEMS 137A, 142A, 147A, 153A)	A-D	8
165	HL79-8		DELETED		
165A	HL82-8APBW		DELETED		
167	HL82-8APBW		DELETED		
168	AS46-4		DELETED		
169	H19700P4		DELETED		
170	BACB28AM07B013A		...BUSHING	A-D	1
175	BACB28AP05P023		...BUSHING	A-D	1
180	113T1831-9		...FITTING- (USED ON ITEM 135)	A,C	1

57-26-21

ILLUSTRATED PARTS LIST

01.1

Page 1026

Nov 01/02


BOEING
 COMPONENT
 MAINTENANCE MANUAL

FIG. & ITEM	PART NO.	AIRLINE PART NUMBER	NOMENCLATURE 1234567	EFF CODE	QTY PER ASSY
01- -180A	113T1831-25		...FITTING- (USED ON ITEMS 137, 137A)	A,C	1
-181	113T1831-25		DELETED		
-182	113T1831-10		...FITTING- (USED ON ITEM 140)	B,D	1
-182A	113T1831-26		...FITTING- (USED ON ITEMS 142, 142A)	B,D	1
-183	113T1831-26		DELETED		
185	113T1831-11		...FITTING- (USED ON ITEM 145)	A,C	1
-185A	113T1831-27		...FITTING- (USED ON ITEMS 147, 147A)	A,C	1
-186	113T1831-27		DELETED		
-187	113T1831-12		...FITTING- (USED ON ITEM 150)	B,D	1
-187G	113T1831-28		...FITTING- (USED ON ITEMS 153, 153A)	B,D	1
188	113T1812-17		DELETED		
189	113T1812-18		DELETED		
190	113T1813-3		DELETED		
190J	BACS40R30B36F		DELETED		
192	113T1831-17		DELETED		
-194	113T1831-18		DELETED		
-195	113T1813-4		DELETED		
196	113T1831-19		DELETED		
-198	113T1831-20		DELETED		
-199	HL10VAZ8-6		DELETED		
200	BACB30LR3-3		DELETED		
-200A	HL10VAZ8-7		DELETED		

57-26-21

 ILLUSTRATED PARTS LIST
 01.1 Page 1027
 Nov 01/02

FIG. & ITEM	PART NO.	AIRLINE PART NUMBER	NOMENCLATURE 1234567	EFF CODE	QTY PER ASSY
01-					
-201	HL79-8		DELETED		
-201A	HL82-8APBW		DELETED		
-202	BACB28AM07B013A		DELETED		
-203	BACB28AP05P023		DELETED		
204	113T1831-25		DELETED		
205	NS103191-02-2		DELETED		
-205A	113T1831-26		DELETED		
206	113T1831-27		DELETED		
-207	113T1831-28		DELETED		
208	BAS40R30C38F		DELETED		
208A	BACS40R30C38F		DELETED		
210	BACR15BA3AD		DELETED		
210A	113T1813-3		..DOOR-ACCESS	A,C	1
-212	113T1813-4		..DOOR-ACCESS	B,D	1
213	BACB30LR3-3		..BOLT	A-D	7
213A	BACB30LR3-4		..BOLT	A-D	1
214	NS103191-02-2		..NUTPLATE- (V80539) (SPEC BACN10KE3B2) (OPT F51750-3-2 (V15653)) (OPT RMF9213-2-3 (V72962)) (OPT BRFR220A3-2 (V52825))	A-D	8
215	113T1803-1		DELETED		
215A	BACR15BA3AD		..RIVET- (SIZE DETERMINE ON INST) -----*	A-D	16
216	113T1803-1		..CLIP	A-D	1

57-26-21

 ILLUSTRATED PARTS LIST
 01.1 Page 1028
 Nov 01/02

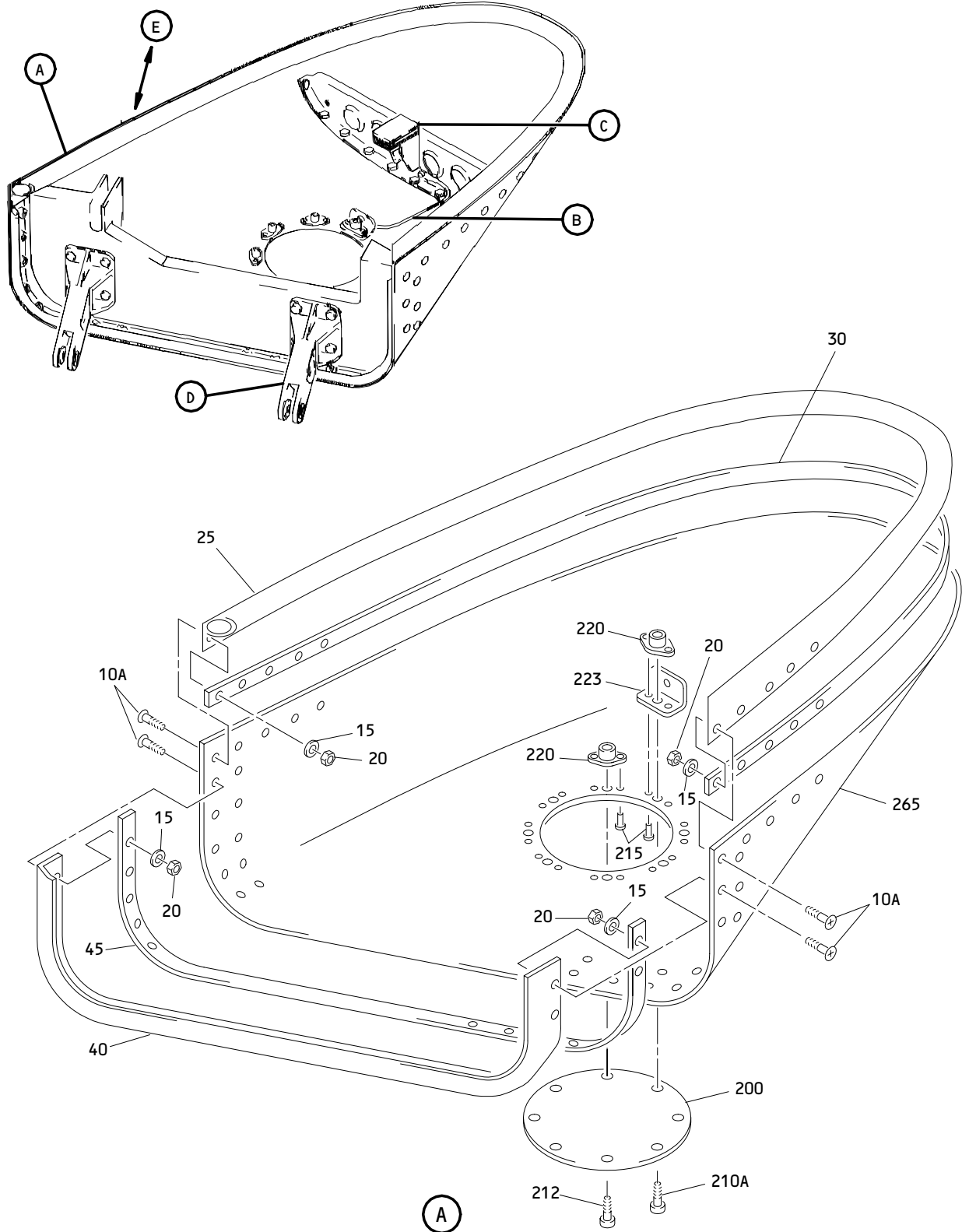

BOEING
 COMPONENT
 MAINTENANCE MANUAL

FIG. & ITEM	PART NO.	AIRLINE PART NUMBER	NOMENCLATURE 1234567	EFF CODE	QTY PER ASSY
01-220	113T1815-1		..BULKHEAD ASSY- (OPT ITEM 220A) (USED ON ITEMS 7, 7A)	A,C	1
-220A	113T1815-5		..BULKHEAD ASSY- (OPT ITEM 220) (USED ON ITEMS 7, 7A)	A,C	1
-220B	113T1815-5		..BULKHEAD ASSY- (USED ON ITEM 7B)	A,C	1
-225	113T1815-2		..BULKHEAD ASSY- (OPT ITEM 225A) (USED ON ITEMS 9, 9A)	B,D	1
-225A	113T1815-6		..BULKHEAD ASSY- (OPT ITEM 225) (USED ON ITEMS 9, 9A)	B,D	1
-225B	113T1815-6		..BULKHEAD ASSY- (USED ON ITEM 9B) ATTACHING PARTS	B,D	1
230	BACR15BA6AD		..RIVET- (SIZE DETERMINE ON INST)	A-D	15
235	NAS1399MW6-4		..RIVET -----*-----	A-D	2
240	BACB28AP05P013		...BUSHING	A-D	1
245	BACB28AM07B013A		...BUSHING	A-D	1
250	113T1815-3		...BULKHEAD- (USED ON ITEM 220)	A,C	1
-250A	113T1815-7		...BULKHEAD- (USED ON ITEMS 220A, 220B)	A,C	1
-255	113T1815-4		...BULKHEAD- (USED ON ITEM 225)	B,D	1
-255A	113T1815-8		...BULKHEAD- (USED ON ITEMS 225A, 225B)	B,D	1
260	113T1851-1		..BOND ASSY	A,C	1
-265	113T1851-2		..BOND ASSY	B,D	1

- Item Not Illustrated

57-26-21

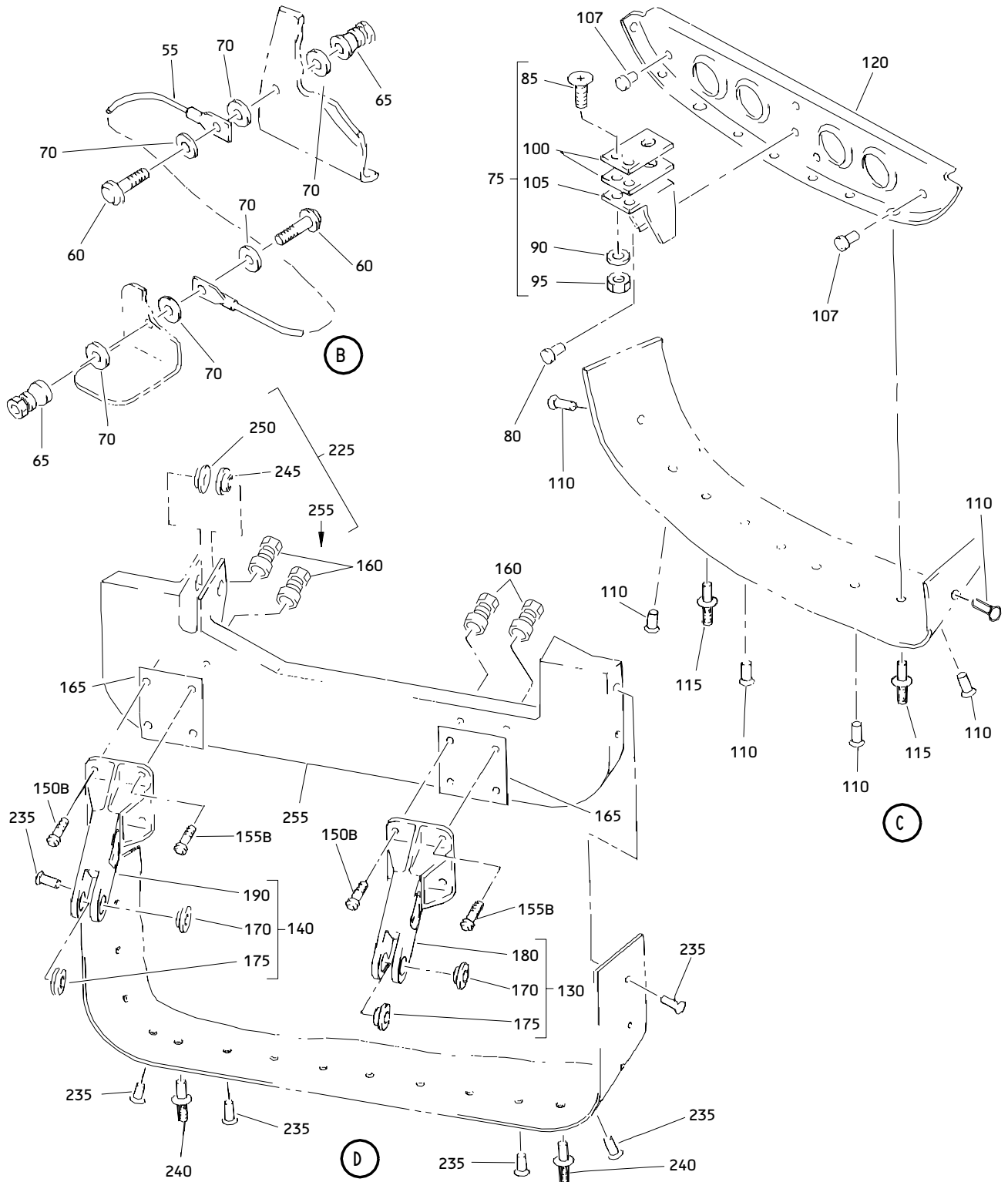
ILLUSTRATED PARTS LIST
 01.1 Page 1029
 Nov 01/02



**Outboard Trailing Edge Flap No. 1 Forward Fairing Assembly
 Figure 2 (Sheet 1)**

57-26-21

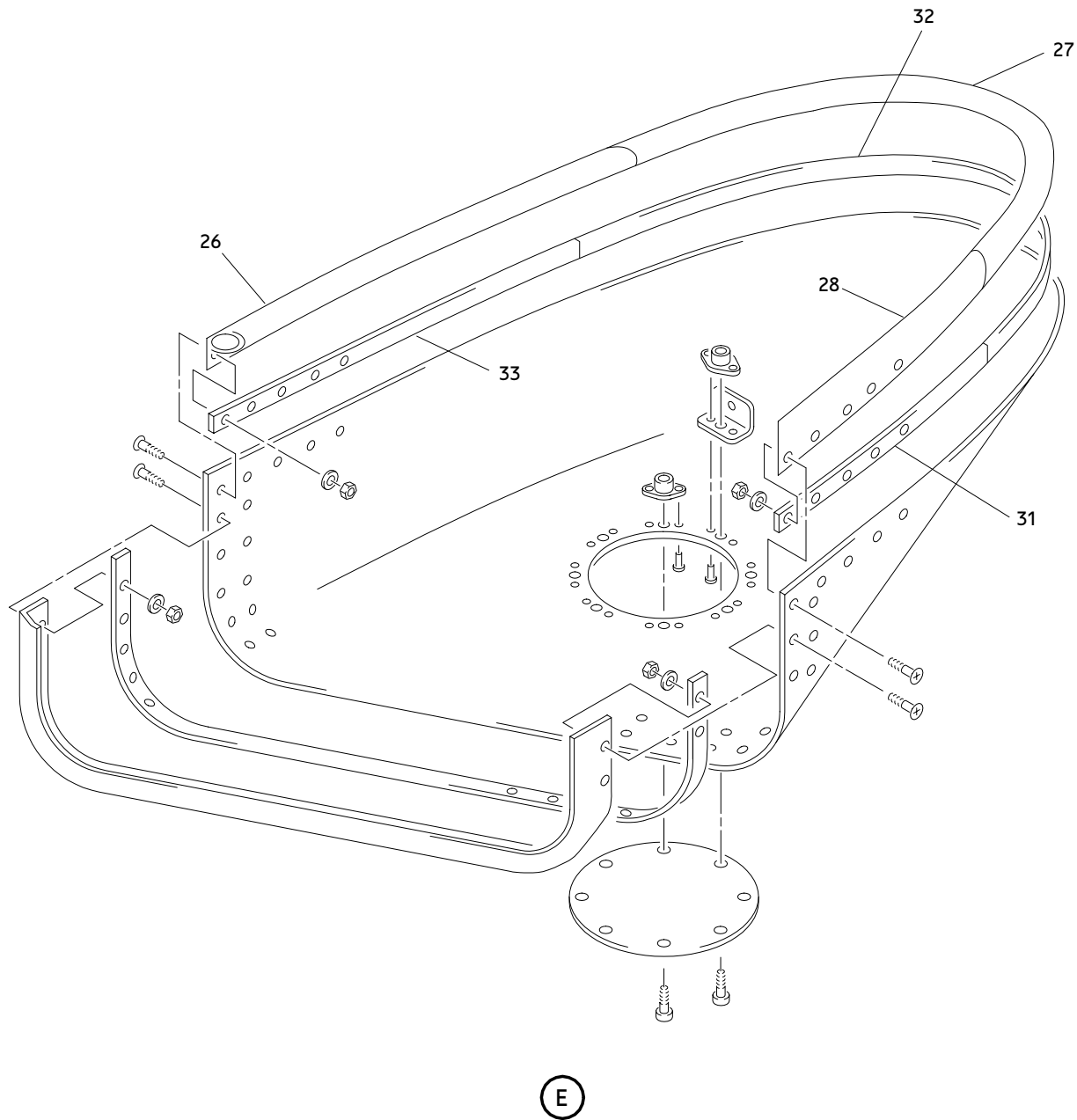
ILLUSTRATED PARTS LIST
 01.1 Page 1030
 Nov 01/02



Outboard Trailing Edge No. 1 Forward Fairing Assembly
Figure 2 (Sheet 2)

57-26-21

ILLUSTRATED PARTS LIST
01.1 Page 1031
Nov 01/02



Outboard Trailing Edge Flap No. 1 Forward Fairing Assembly
Figure 2 (Sheet 3)

57-26-21

ILLUSTRATED PARTS LIST
01.1 Page 1032
Nov 01/02


BOEING
 COMPONENT
 MAINTENANCE MANUAL

FIG. & ITEM	PART NO.	AIRLINE PART NUMBER	NOMENCLATURE 1234567	EFF CODE	QTY PER ASSY
02- -1	113T1811-19SP		FAIRING ASSY-OUTBD TE FLAP NO. 1 FWD (LH)	E	RF
-1A	113T1811-21		FAIRING ASSY-OUTBD TE FLAP NO. 1 FWD (VARIABLE) (LH)	F	RF
-1B	113T1811-23SP		FAIRING ASSY-OUTBD TE FLAP NO. 1 FWD (LH)	J	RF
-1C	113T1811-25		FAIRING ASSY-OUTBD TE FLAP NO. 1 FWD (VARIABLE) (LH)	L	RF
-1D	113T1811-27		FAIRING ASSY-OUTBD TE FLAP NO. 1 FWD (LH)	N	RF
-1E	113T1811-45		FAIRING ASSY-OUTBD TE FLAP NO. 1 FWD (VARIABLE) (LH)	Q	RF
R -1F	113T1811-51		FAIRING ASSY-OUTBD TE FLAP NO. 1 FWD (LH)	S	RF
R -1G	113T1811-63G		FAIRING ASSY-OUTBD TE FLAP NO. 1 FWD (LH)	U	RF
-5	113T1811-20SP		FAIRING ASSY-OUTBD TE FLAP NO. 1 FWD (RH)	G	RF
-5A	113T1811-22		FAIRING ASSY-OUTBD TE FLAP NO. 1 FWD (VARIABLE) (RH)	H	RF
-5B	113T1811-24SP		FAIRING ASSY-OUTBD TE FLAP NO. 1 FWD (RH)	K	RF
-5C	113T1811-26		FAIRING ASSY-OUTBD TE FLAP NO. 1 FWD (VARIABLE) (RH)	M	RF
-5D	113T1811-28		FAIRING ASSY-OUTBD TE FLAP NO. 1 FWD (RH)	P	RF
-5E	113T1811-46		FAIRING ASSY-OUTBD TE FLAP NO. 1 FWD (VARIABLE) (RH)	R	RF
R -5F	113T1811-52		FAIRING ASSY-OUTBD TE FLAP NO. 1 FWD (RH)	T	RF
R -5G	113T1811-64G		FAIRING ASSY-OUTBD TE FLAP NO. 1 FWD (RH)	V	RF
10	BACB30NN3K4		DELETED		
10A	BACB30NN3K2		.BOLT	E-V	35
15	AN960XC10L		.WASHER	E-V	35

57-26-21

 ILLUSTRATED PARTS LIST
 01.1 Page 1033
 Nov 01/02

FIG. & ITEM	PART NO.	AIRLINE PART NUMBER	NOMENCLATURE 1234567	EFF CODE	QTY PER ASSY
02-20	H10-3BAC		.NUT- (V15653) (SPEC BACN10JC3) (OPT NS202101-02 (V80539)) (OPT RMLH9075-3W (V72962)) (OPT T6S1032J (V71087)) (OPT VN303A02 (V92215)) (OPT 96-02 (V80539)) (OPT BRH10A3 (V52828))	E-M	35
-20A 25	NAS1805-3L 113T1811-5		.NUT .SEAL- (-5 SEAL T/W -7 RETAINER I/W -29 & -31 & -33 SEALS T/W -35 & -37 & -39 RETAINERS ON THE LEFT SIDE ONLY) (-5 SEAL T/W -8 RETAINER I/W -30 & -32 & -34 SEALS T/W -36 & -38 & -40 RETAINERS ON THE RIGHT SIDE ONLY) (MFD FROM 10-60754-319 62.00 IN. EXTR RUBBER)	N-V E-M	35 1

57-26-21

 ILLUSTRATED PARTS LIST
 01.1 Page 1034
 Nov 01/02


BOEING
 COMPONENT
 MAINTENANCE MANUAL

FIG. & ITEM	PART NO.	AIRLINE PART NUMBER	NOMENCLATURE 1234567	EFF CODE	QTY PER ASSY
02-26	113T1811-29		.SEAL- (-5 SEAL T/W -7 RETAINER I/W -29 & -31 & -33 SEALS T/W -35 & -37 & -39 RETAINERS ON THE LEFT SIDE ONLY) (MFD FROM EXTR RUBBER 10-60754-278 9.50 IN.)	N,Q	1
R -26A	113T1811-47		.SEAL- (MFD FROM EXTR RUBBER 10-60754-278 9.50 IN)	S,U	1
-26G	113T1811-30		.SEAL- (-5 SEAL T/W -8 RETAINER I/W -30 & -32 & -34 SEALS T/W -36 & -38 & -40 RETAINERS ON THE RIGHT SIDE ONLY) (MFD FROM EXTR RUBBER 10-60754-278 25.01 IN)	P,R	1
R -26H	113T1811-48		.SEAL- (MFD FROM EXTR RUBBER 10-60754-278 25.01 IN)	T,V	1
27	113T1811-33		.SEAL- (-5 SEAL T/W -7 RETAINER I/W -29 & -31 & -33 SEALS T/W -35 & -37 & -39 RETAINERS ON THE LEFT SIDE ONLY) (MFD FROM EXTR RUBBER 10-60754-319 25.01 IN.) (OPT ITEMS 27A, 27C)	N,Q	1

57-26-21

 ILLUSTRATED PARTS LIST
 01.1 Page 1035
 Nov 01/02

FIG. & ITEM	PART NO.	AIRLINE PART NUMBER	NOMENCLATURE 1234567	EFF CODE	QTY PER ASSY
R 02-27A	113T1811-43		.SEAL- (OPT ITEMS 27, 27C)	N,Q	1
R -27B	113T1811-61		.SEAL- (OPT ITEM 27D)	S,U	1
R -27C	113T1811-61		.SEAL- (OPT ITEMS 27, 27A)	N,Q	1
R -27D	113T1811-33		.SEAL- (-5 SEAL T/W -7 RETAINER I/W -29 & -31 & -33 SEALS T/W -35 & -37 & -39 RETAINERS ON THE LEFT SIDE ONLY) (MFD FROM EXTR RUBBER 10-60754-319 25.01 IN.) (OPT ITEM 27B)	S,U	1
-27G	113T1811-34		.SEAL- (-5 SEAL T/W -8 RETAINER I/W -30 & -32 & -34 SEALS T/W -36 & -38 & -40 RETAINERS ON THE RIGHT SIDE ONLY) (MFD FROM EXTR RUBBER 10-60754-319 25.01 IN.) (OPT ITEMS 27H, 27K)	P,R	1
R -27H	113T1811-44		.SEAL- (OPT ITEMS 27G, 27K)	P,R	1
R -27J	113T1811-62		.SEAL- (OPT ITEM 27L)	T,V	1
R -27K	113T1811-62		.SEAL- (OPT ITEMS 27G, 27H)	P,R	1

57-26-21

 ILLUSTRATED PARTS LIST
 01.1 Page 1036
 Nov 01/02

BOEING
 COMPONENT
 MAINTENANCE MANUAL

FIG. & ITEM	PART NO.	AIRLINE PART NUMBER	NOMENCLATURE 1234567	EFF CODE	QTY PER ASSY
R 02-27L	113T1811-34		.SEAL- (-5 SEAL T/W -8 RETAINER I/W -30 & -32 & -34 SEALS T/W -36 & -38 & -40 RETAINERS ON THE RIGHT SIDE ONLY) (MFD FROM EXTR RUBBER 10-60754-319 25.01 IN.) (OPT ITEM 27J)	T,V	1
28	113T1811-31		.SEAL- (-5 SEAL T/W -7 RETAINER I/W -29 & -31 & -33 SEALS T/W -35 & -37 & -39 RETAINERS ON THE LEFT SIDE ONLY) (MFD FROM EXTR RUBBER 10-60754-278 18.5 IN.)	N,Q	1
R -28A	113T1811-49		.SEAL- (MFD FROM EXTR RUBBER 10-60754-278 18.5 IN)	S,U	1
-28G	113T1811-32		.SEAL- (-5 SEAL T/W -8 RETAINER I/W -30 & -32 & -34 SEALS T/W -36 & -38 & -40 RETAINERS ON THE RIGHT SIDE ONLY) (MFD FROM EXTR RUBBER 10-60754-278 25.01 IN)	P,R	1
R -28H	113T1811-50		.SEAL- (MFD FROM EXTR RUBBER 10-60754-278 25.01 IN)	T,V	1

57-26-21

ILLUSTRATED PARTS LIST
 01.1 Page 1037
 Nov 01/02

FIG. & ITEM	PART NO.	AIRLINE PART NUMBER	NOMENCLATURE 1234567	EFF CODE	QTY PER ASSY
02-30	113T1811-7		.RETAINER	E,F,J ,L	1
R 31	113T1811-35		.RETAINER	N,Q	1
-31A	113T1811-57		.RETAINER	S,U	1
32	113T1811-37		.RETAINER	N,Q,S ,U	1
R 33	113T1811-39		.RETAINER	N,Q	1
-33A	113T1811-59		.RETAINER	S,U	1
-35	113T1811-8		.RETAINER	G,H,K ,M	1
R -36	113T1811-36		.RETAINER	P,R	1
-36A	113T1811-58		.RETAINER	T,V	1
-37	113T1811-38		.RETAINER	P,R,T ,V	1
R -38	113T1811-40		.RETAINER	P,R	1
-38A	113T1811-60		.RETAINER	T,V	1
40	113T1811-6		.SEAL- (MFD FROM EXTR RUBBER 10-60754-336 36.00 IN.)	E,F,J ,L,N, Q,S,U	1
-43	113T1811-11		.SEAL- (MFD FROM EXTR RUBBER 10-60754-336 36.00 IN.)	G,H,K ,M,P, R,T,V	1
45	113T1811-9		.RETAINER	E,F,J ,L	1
-45A	113T1811-41		.RETAINER	N,Q,S ,U	1
-50	113T1811-10		.RETAINER	G,H,K ,M	1
-50A	113T1811-42		.RETAINER	P,R,T ,V	1

57-26-21

ILLUSTRATED PARTS LIST

01.1

Page 1038

Nov 01/02

BOEING
 COMPONENT
 MAINTENANCE MANUAL

FIG. & ITEM	PART NO.	AIRLINE PART NUMBER	NOMENCLATURE 1234567	EFF CODE	QTY PER ASSY
02-55	BACJ40A20-4		. JUMPER	E-V	1
60	HL448UC6-4		. BOLT- (V56878) (SPEC BACB30MB6A4) (OPT HL448UC6-4 (V73197)) (OPT HL448UC6-4 (V92215)) (OPT HL448UC6-4 (V97928)) (OPT 69308-6A4 (V56878)) (OPT HL448UC6-4 (V80539)) (OPT HL448UC6-4 (V08524)) (OPT HL448UC6-4 (V9N513)) (OPT WC4486-4 (V60516))	E-V	2
65	HL1187-6		. COLLAR- (V73197) (SPEC BACC30X6) (OPT HL87-6 (V73197)) (OPT HL87-6 (V92215)) (OPT HL1187-6 (V56878)) (OPT HL1187-6 (V92215)) (OPT HL87-6 (V56878)) (OPT HL1187-6 (V5M902))	E-V	2
70	AN960-10L		. WASHER	E-V	6
75	113T1817-1		. FITTING ASSY	E-V	1
80	BACR15FT8KE		ATTACHING PARTS . RIVET- (SIZE DETERMINE ON INST) -----*-----	E-V	2

57-26-21

ILLUSTRATED PARTS LIST
 01.1 Page 1039
 Nov 01/02

FIG. & ITEM	PART NO.	AIRLINE PART NUMBER	NOMENCLATURE 1234567	EFF CODE	QTY PER ASSY
02-85	BACS12ER08K12		..SCREW	E-V	2
90	AN96OPD8		..WASHER	E-V	2
95	H10-08BAC		..NUT- (V15653) (SPEC BACN10JC08) (OPT NS202101-82 (V80539)) (OPT RMLH9075-82W (V72962)) (OPT T6S832J (V71087)) (OPT VN303A82 (V92215)) (OPT 96-82 (V80539)) (OPT BRH10A08 (V52828))	E-V	2
100	BACF3F014J020NN		..FILLER	E-V	2
105	113T1817-4		..FITTING-BATHTUB	E-V	1
107	BACR15FT8AD		.RIVET- (SIZE DETERMINE ON INST)	E-V	2
110	BACR15BA6AD		.RIVET- (SIZE DETERMINE ON INST)	E-V	8
115	NAS1399MW6-4		.RIVET	E-V	2
120	113T1811-3		.BULKHEAD	E,F,J L,N Q,S,U	1
-125	113T1811-4		.BULKHEAD	G,H,K M,P R,T,V	1
130	113T1831-17		.FITTING ASSY-HINGE	E,F,J L,N Q,S,U	1
-135	113T1831-18		.FITTING ASSY-HINGE	G,H,K M,P R,T,V	1
140	113T1831-19		.FITTING ASSY-HINGE	E,F,J L,N Q,S,U	1
-145	113T1831-20		.FITTING ASSY-HINGE	G,H,K M,P R,T,V	1
			ATTACHING PARTS		

57-26-21

ILLUSTRATED PARTS LIST

01.1

Page 1040

Nov 01/02


BOEING
 COMPONENT
 MAINTENANCE MANUAL

FIG. & ITEM	PART NO.	AIRLINE PART NUMBER	NOMENCLATURE 1234567	EFF CODE	QTY PER ASSY
02-					
150	HL10VAZ8-6		DELETED		
150A	NAS6604-8		DELETED		
150B	NAS6604-6		.BOLT	E-V	4
155	HL10VAZ8-7		DELETED		
155A	NAS6604-9		DELETED		
155B	NAS6604-7		.BOLT	E-V	4
157	AS46-4		DELETED		
160	HL82-8APBW		.COLLAR- (V73197) (SPEC BACC30AG8) (OPT HL82-8APBW (V92215)) (OPT HL82-8APBW (V56878)) (OPT HL82-8APBW (V5M902))	E-V	8
160A	H19700P4		DELETED		
165	BACS40R30C38F		.SHIM -----*	E-V	AR
170	BACB28AM07B013A		..BUSHING	E-V	1
175	BACB28AP05P023		..BUSHING	E-V	1
180	113T1831-25		..FITTING- (USED ON ITEM 130)	E,F,J ,L,N, Q,S,U	1
-185	113T1831-26		..FITTING- (USED ON ITEM 135)	G,H,K ,M,P, R,T,V	1
190	113T1831-27		..FITTING- (USED ON ITEM 140)	E,F,J ,L,N, Q,S,U	1
-195	113T1831-28		..FITTING- (USED ON ITEM 145)	G,H,K ,M,P, R,T,V	1

57-26-21

 ILLUSTRATED PARTS LIST
 01.1 Page 1041
 Nov 01/02

FIG. & ITEM	PART NO.	AIRLINE PART NUMBER	NOMENCLATURE 1234567	EFF CODE	QTY PER ASSY
02-200	113T1813-3		.DOOR-ACCESS	E,F,J L,N Q,S,U	1
-205	113T1813-4		.DOOR-ACCESS	G,H,K M,P R,T,V	1
210	BACB30LR3-3		.BOLT	E-V	7
212	BACB30LR3-4		.BOLT	E-V	1
215	BACR15BA3AD		.RIVET- (SIZE DETERMINE ON INST)	E-V	16
220	NS103191-02-2		.NUTPLATE- (V80539) (SPEC BACN10KE3B2) (OPT F51750-3-2 (V15653)) (OPT RMF9213-2-3 (V72962)) (OPT BRFR220A3-2 (V52825))	E-V	8
223	113T1803-1		..CLIP	E-V	1
225	113T1815-5		.BULKHEAD ASSY	E,F,J L,N Q,S,U	1
-230	113T1815-6		.BULKHEAD ASSY	G,H,K M,P R,T,V	1
235	BACR15BA6AD		ATTACHING PARTS .RIVET- (SIZE DETERMINE ON INST)	E-V	15
240	NAS1399MW6-4		.RIVET -----*	E-V	2
245	BACB28AP05P013		..BUSHING	E-V	1

57-26-21

 ILLUSTRATED PARTS LIST
 01.1 Page 1042
 Nov 01/02


BOEING
 COMPONENT
 MAINTENANCE MANUAL

FIG. & ITEM	PART NO.	AIRLINE PART NUMBER	NOMENCLATURE 1234567	EFF CODE	QTY PER ASSY
02- 250	BACB28AM07B013A		..BUSHING	E-V	1
255	113T1815-7		..BULKHEAD	E,F,J L,N Q,S,U	1
-260	113T1815-8		..BULKHEAD	G,H,K M,P R,T,V	1
265	113T1851-1		.BOND ASSY	E,F,J L,N Q,S,U	1
-270	113T1851-2		.BOND ASSY	G,H,K M,P R,T,V	1

- Item Not Illustrated

57-26-21

ILLUSTRATED PARTS LIST

01.1

Page 1043

Nov 01/02